



th<sup>®</sup>  
clothes

2019  
Collection

# Brand Overview

*TH Clothes was born in 2006 with the creation of its logo and the first products, the Delta sweatshirt. The brand appears on the market in order to address the need to provide certified quality products at a fair price.*

*From 2010 to 2015, the brand has grown exponentially in the Portuguese market and has designed 16 new products. 2015 was also the year of internationalization of the brand that already has sales to 12 countries in Europe.*

*2016 was a big year for TH Clothes. The brand presented 37 new products, seeking to satisfy their customers' needs at all levels. Because it needed to consolidate and expand, TH Clothes bet in 2017 on strengthening its permanent stock, doubling it, with approximately 6 million articles ready to ship in 24 hours for the national market and in 2 to 5 days for the European market, with sales to 27 countries. It presented 2 new articles relevant to market niches that considered to be essential.*

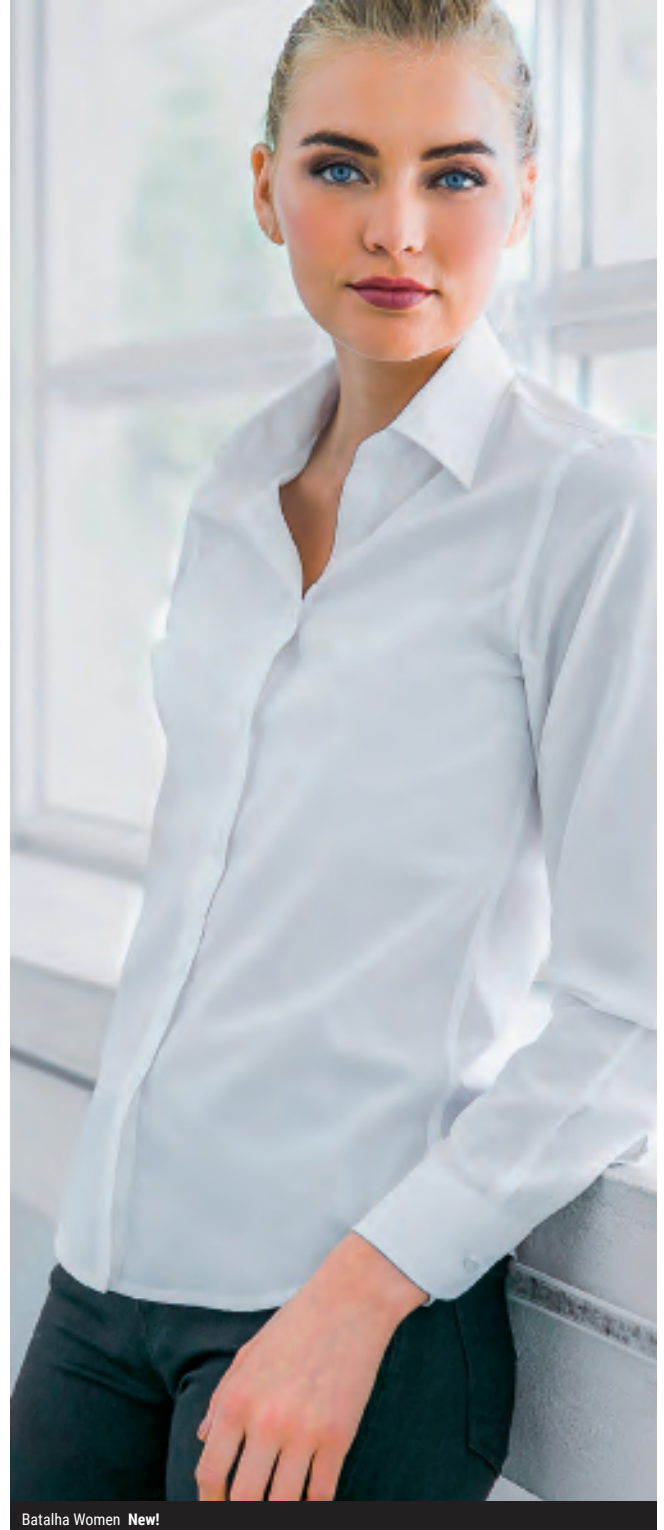
*The brand also continued its focus on digital marketing tools, integrated new solutions that feature usability and relevance to the business of our customers.*

*TH Clothes has continued to play a strong role in social responsibility by maintaining its partnership with AMI by donating part of the sales of the entire Ankara range. It continued to integrate the ColorAdd language, a system that allows colour-blind people to identify colours.*

*In 2018, TH Clothes took a stance of solidity and confidence. It reinforced its permanent stock, intensified its range of colours in a sustained way and introduced 5 new articles that it considered essential in the promotional markets.*

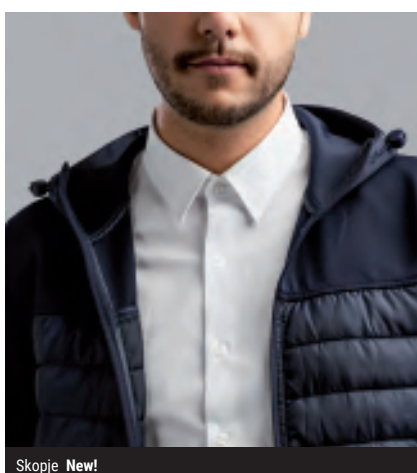
*It also strengthened its role in social responsibility by establishing a new partnership with the HOPE Foundation for Women and Children of Bangladesh with the aim of building a new medical centre that will provide general / primary health, maternal health, child care and is to be the reference centre for the following specialized care at HOPE Hospital: obstetric fistula repair, lip / palate cleft repair, reconstructive burns surgery and will also serve as an outpost for research programs. It has also become a member of the Fair Wear Foundation, a certification confirming its collaboration with the manufacturers for a constant improvement in working conditions.*

***For 2019, the brand sought to revolutionize its range of colours introducing 10 new colours in the main articles of its most important ranges, with special highlight to the 6 pastel colours. It also presented 7 new articles endowed with premium design in order to respond effectively to the demands of the markets and also to maintain its modern and cosmopolitan image.***



# Index

2 + 3	Brand Overview + Index
4 + 5	New in 2019
6 + 7	Ranges
8 + 9	<b>T-shirt T-you</b>
10 + 11	Luanda + Sofia
12	Ankara
13	Ankara Women
14	San Marino
15	THC Sub
16	Athens
17	Athens Women
18	Tirana
19	Ibiza
20	Bucharest
21	Bucharest Women
22 + 23	T-Shirt T-you Mockup
24 + 25	<b>We &lt;3 Sports</b>
26	Nicosia
27	Nicosia Women
28	Riga
29	Brussels <b>New!</b>
30 + 31	<b>Work + Fun</b>
32	Dhaka <b>New!</b>
33	Adam
34	Eve
35	Monaco
36 + 37	Rome + Rome Women
38	Berlin
39	Bern
40	Bern Women
41	Polo Shirts Mockup
42 + 43	<b>Corporate</b>
44	Batalha <b>New!</b>
45	Batalha Women <b>New!</b>
46	Tokyo
47	Tokyo Women
48	London
49	London Women
50 + 51	<b>Selection</b>
52	Milan RN <b>New!</b>
53	Lisbon + Lisbon Trousers & Blazer
54 + 55	Milan + Milan Women
56 + 57	Paris + Paris Women
58	Madrid
59	Madrid Women
60	San Marino



61	Selection Mockup
62 + 63	<b>Cool Sweats</b>
64	Delta
65	Phoenix
66	Moscow
67	Amsterdam
68	Amsterdam Women
69	Budapest
70 + 71	<b>Winter Wonderland</b>
72	Helsinki
73	Helsinki Women
74	Vienna
75	Dublin
76	Prague
77	Winter Wonderland Mockup
78 + 79	<b>Natural Kids</b>
80	Quito
81	Ankara Kids
82	Adam Kids
83	Phoenix Kids
84	Dublin Kids
85	Kids Mockup
86 + 87	<b>Good Work</b>
88	Berlin
89	Stockholm
90	Warsaw + Warsaw Protect
91	Zagreb Work
92 + 93	<b>Essential Jackets</b>
94	Oporto <b>New!</b>
95	Skopje <b>New!</b>
96	Brussels <b>New!</b>
97	Zagreb
98	Zagreb Women
99	Liubliana
100	Copenhagen
101	Zagreb Work
102 + 103	Essential Jackets Mockup
104 + 105	Imagined & Designed in PT + Portuguese DNA
106 + 107	Social Responsibility - Hope & Ami
108	Certification
109	Color Add
110	Syntax
111 - 121	Technical Info
122 + 123	Colour palette

# New! Products 2019



Milan RN men's round neck jumper



Oporto men's bicolour sportswear jacket



Batalha Women women's long sleeve poplin shirt



Batalha men's long sleeve poplin shirt



Skopje men's full zip hooded jacket



Brussels unisex padded down parka



Dhaka men's polo shirt

# New! Colours 2019



### New Colour Combos

-  Eclipse Blue + Grey Melange
-  Forest Green + White
-  Apple Green + Navy Blue

Six new pastel colours!

Pastel White

Pastel Yellow

Pastel Salmon

Pastel Pink

Pastel Blue

Pastel Green

Army

Purple

Ash

Mustard



# Ranges 2019

**Events  
& General  
Promotion**



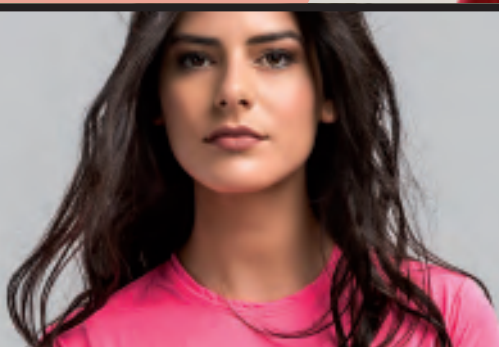
**Corporate  
Uniforms**



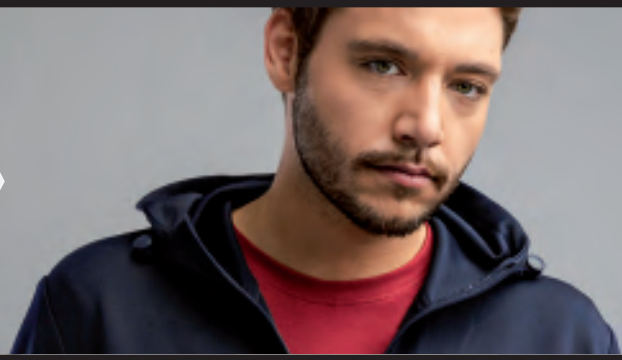
**Distribution  
& Logistics**



**Sports  
& Leisure**



**Fashion  
& Branding**



**Hospitality  
& Catering**



**Workwear**



**Schools  
& Children**

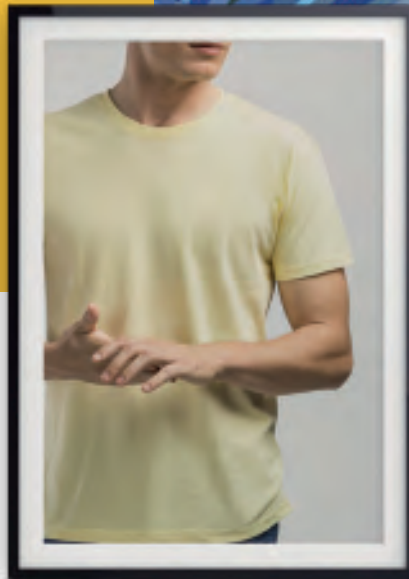


**High  
Visibility**

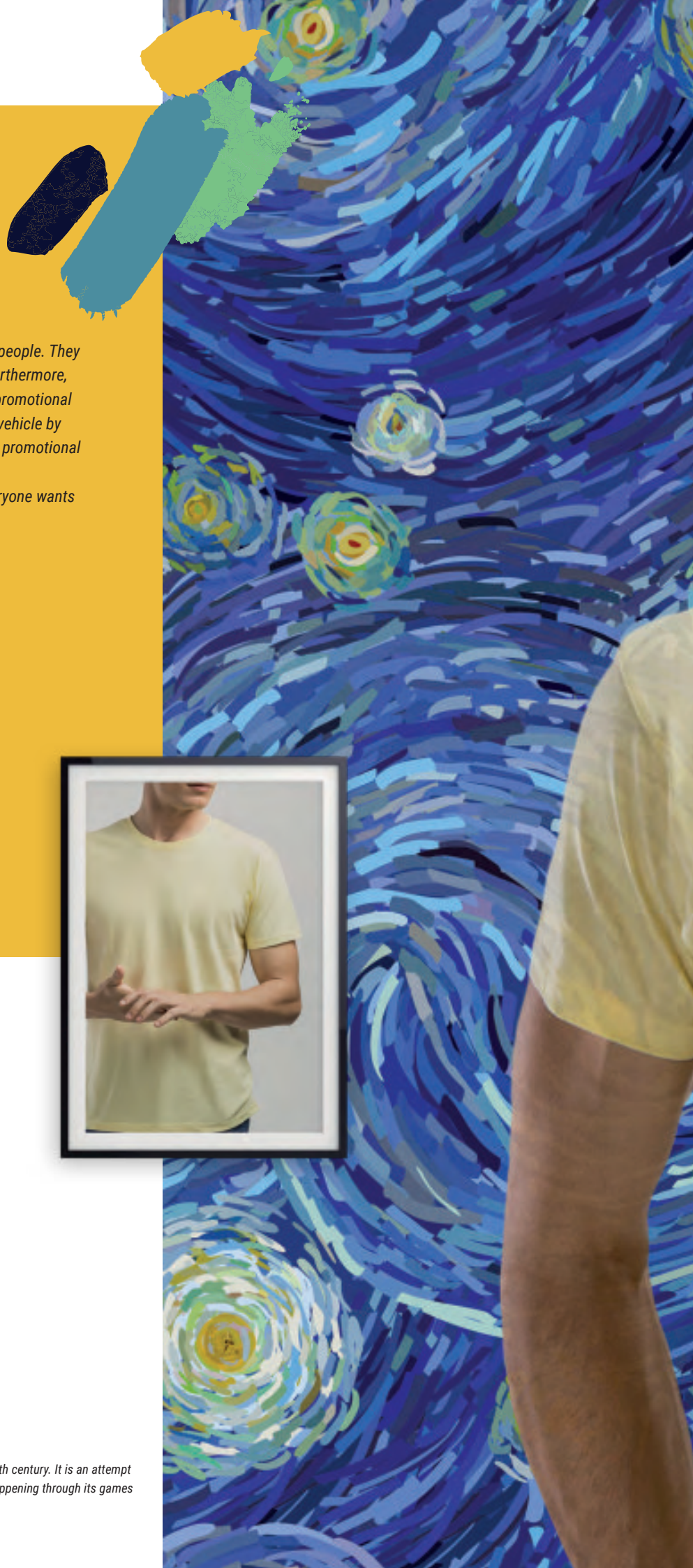


*T-shirts are still the preferred garment for most people. They have a flawless style and are always fashion. Furthermore, they are comfortable and practical. Also in the promotional market the t-shirt is, these days, the most used vehicle by brands to create visibility. About 76% of custom promotional textiles are t-shirts. Increasingly, custom t-shirts are stylish and everyone wants to show them.*

*Your t-shirt is you!*



**Impressionism:** Artistic movement that began in the nineteenth century. It is an attempt to apprehend not only the image but also the action that is happening through its games of light and colors that capture actions, feelings, thoughts.





t-shirt  
t-you

CUT INNOVATION / DESIGN / COMFORT / QUALITY DETAILS / TOUCH / COLOUR



## LUANDA 29 COLOURS 10 NEW

In 2019, the Luanda t-shirt has expanded its range of colors, having now 29 different solutions with special focus on pastel colors that promise to change the promotional market. In addition to these, Luanda presents other essential colors to respond to a greater number of markets.





# Luanda

men's t-shirt

150 G/M<sup>2</sup>

100% Jersey Cotton  
 1x1 Rib collar with reinforcing jersey tape  
 Double stitch on sleeves and bottom of article  
 Tubular

SIZES WIDTH / HEIGHT						
XS	S	M	L	XL	XXL	3XL
47/67 cm	50/69 cm	53/72 cm	56/74 cm	59/76 cm	62/79 cm	65/82 cm



White, Black, Lemon, Yellow, Orange, Red, Burgundy, Fuchsia, Orchid Pink, Eclipse Blue

Navy Blue, Royal Blue, Atoll Blue, Aqua, Apple Green, Kelly Green, Forest Green<sup>1</sup>, Grey, Grey Melange<sup>2</sup>

10 NEW COLOURS:

New! Pastel White, New! Pastel Yellow, New! Pastel Salmon, New! Pastel Pink, New! Pastel Blue, New! Pastel Green, New! Army, New! Purple, New! Ash, New! Mustard

1. 65% cotton / 35% polyester • 2. 90% cotton / 10% viscose

# Sofia

women's t-shirt

150 G/M<sup>2</sup>

100% Jersey Cotton  
 Reinforcing satin tape at neck • Thin Jersey Collar  
 Double stitch on sleeves and bottom of article  
 Fitted, cut and sewn



SIZES WIDTH / HEIGHT					
S	M	L	XL	XXL	3XL
41/60 cm	44/62 cm	47/64 cm	50/66 cm	53/68 cm	56/70 cm



White, Black, Yellow, Orange, Red, Burgundy, Fuchsia, Orchid Pink, Eclipse Blue

Navy Blue, Royal Blue, Atoll Blue, Aqua, Apple Green, Kelly Green, Grey Melange\*, New! Mustard

















\* 90% cotton / 10% viscose

# Ankara

men's t-shirt

190 G/M<sup>2</sup>



- White 
- Black 
- Yellow 
- Orange 
- Red 
- Orchid Pink 
- Navy Blue 
- Royal Blue 
- Atoll Blue 
- Aqua 
- Apple Green 
- Kelly Green 
- \* Grey Melange 
- Grey 
- New!** Burgundy 
- New!** Eclipse Blue 

100% Jersey Cotton  
 1x1 Rib collar with reinforcing jersey tape  
 Double stitch on sleeves and bottom of article  
 Tubular



SIZES WIDTH / HEIGHT

XS	S	M	L	XL	XXL	3XL	4XL#
47/67 cm	50/69 cm	53/71 cm	56/74 cm	59/76 cm	62/79 cm	65/82 cm	68/85 cm













\* 90% cotton / 10% viscose  
 # only available in White, Black, Navy Blue and Grey Melange

# Ankara Women

women's t-shirt

190 G/M<sup>2</sup>



-  White
-  Black
-  Red
-  Fuchsia
-  Navy Blue
-  Royal Blue
-  Atoll Blue
-  Aqua
-  Apple Green
-  Kelly Green
-  Grey Melange \*
-  **New!**  
Eclipse Blue



100% Jersey Cotton  
 Reinforcing satin tape at neck  
 Thin Jersey Collar  
 Double stitch on sleeves and bottom of article  
 Cut and sewn  
 Fitted



SIZES WIDTH / HEIGHT

S	M	L	XL	XXL
41/62 cm	44/64 cm	47/66 cm	50/68 cm	53/70 cm

1. 90% cotton / 10% viscose

# San Marino

men's t-shirt

195 G/M<sup>2</sup>



COTTON PIQUÉ



REMOVABLE  
VISIBLE LABEL



- White 
- Black 
- \* Grey Melange 
- Eclipse Blue 

100% Cotton Piqué  
Thin 1x1 Rib collar with reinforcing tape  
Cut and Sewn  
Rib on the sleeve  
Removable label  
No label on the collar



SIZES WIDTH / HEIGHT

S	M	L	XL	XXL
50/70 cm	52/72 cm	54/74 cm	57/75 cm	60/76 cm

\* 85% cotton / 15% viscose

# THC Sub

unisex t-shirt

160 G/M<sup>2</sup>



PATENTED ARMHOLE DESIGN WHICH ALLOWS FULL SUBLIMATION

FULL SUBLIMATION EXAMPLE



100% Polyester jersey  
 1x1 Rib collar with reinforcing jersey tape  
 Double stitch on sleeves and bottom of article  
 Patented armhole design which allows full sublimation



SIZES WIDTH / HEIGHT

XS	S	M	L	XL	XXL
47/67 cm	50/69 cm	53/72 cm	56/74 cm	59/76 cm	62/79 cm

# Athens

men's "V-neck" t-shirt

150 G/M<sup>2</sup>



100% Jersey Cotton

Short sleeved

"V" Neck

Jersey collar and reinforcing tape

Double stitch on sleeves and bottom of article

Tubular



SIZES WIDTH / HEIGHT

S	M	L	XL	XXL
48/69,5 cm	50/71,5 cm	52/73 cm	57/75,5 cm	58/77 cm

\* 60% cotton / 40% polyester





# Athens Women

women's "V-neck" t-shirt

150 G/M<sup>2</sup>



- White
- Black
- Fuchsia
- Aqua
- Red Melange \*
- Green Melange \*
- Navy Blue Melange \*

100% Jersey Cotton  
 Short sleeved  
 Overlapped "V" Neck  
 Jersey collar and reinforcing tape  
 Double stitch on sleeves and bottom of article  
 Cut and sewn  
 Fitted

\* 60% cotton / 40% polyester



SIZES WIDTH / HEIGHT

S	M	L	XL	XXL
42/62 cm	44/64 cm	46/66 cm	48/68 cm	50/70 cm

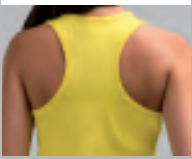
# Tirana









women's tank top

160 G/M<sup>2</sup>



RACER BACK



- White 
- Black 
- Lemon 
- Sunset Orange 
- Fuchsia 
- Red 
- Caribbean Green 
- Aqua 

100% Jersey Cotton  
Racer back  
Cut and sewn



SIZES WIDTH / HEIGHT

S	M	L	XL	XXL
37,5/62 cm	40,5/64 cm	43,5/66 cm	46,5/68 cm	49,5/70 cm



# Ibiza

men's tank top

140 G/M<sup>2</sup>



- White
- Black
- Sunset Orange
- Red Melange <sup>1</sup>
- Green Melange <sup>1</sup>
- Navy Blue Melange <sup>1</sup>
- Grey Melange <sup>2</sup>

100% Jersey Cotton  
 Deep armholes  
 Cut and sewn



SIZES WIDTH / HEIGHT

XS	S	M	L	XL	XXL
47/70 cm	50/72 cm	53/74 cm	56/76 cm	59/78 cm	62/80 cm

1. 60% cotton / 40% polyester • 2. 90% cotton / 10% viscose

# Bucharest

men's long sleeve t-shirt

150 G/M<sup>2</sup>



100% Jersey Cotton  
 1x1 Rib collar with reinforcing jersey tape  
 Double stitch on sleeves and bottom of article  
 Tubular



SIZES WIDTH / HEIGHT

S	M	L	XL	XXL
50/71 cm	52/73 cm	54/74,5 cm	58/76,5 cm	61/78 cm

\* 60% cotton / 40% polyester

# Bucharest Women

women's long sleeve t-shirt

150 G/M<sup>2</sup>



- White
- Black
- Red
- Navy Blue
- Red Melange \*
- Green Melange \*
- Navy Blue Melange \*

100% Jersey Cotton  
 Jersey collar  
 Double stitch on sleeves and bottom of article  
 Cut and sewn  
 Fitted



SIZES WIDTH / HEIGHT

S	M	L	XL	XXL
42/61 cm	44/63 cm	46/65 cm	48/67 cm	50/69 cm

\* 60% cotton / 40% polyester

# T-SHIRT T-YOU

## T-SHIRTS & TANK TOPS



### 10 NEW COLOURS LUANDA

*men's t-shirt  
in 100% jersey cotton*



### FITTED ATHENS WOMEN

*women's "V-neck" t-shirt  
in 100% jersey cotton*





TIRANA



BUCHAREST



ATHENS

## YOUR T-SHIRT IS YOU!

*t-shirts have a flawless style  
and are always fashionable,  
comfortable and practical*



## CASUAL CHIC SAN MARINO

*men's t-shirt with no label on the collar  
100% cotton piqué*



*TH Clothes' sports range has been designed thinking of the modern trends of the promotional market. To do so, we've diversified the cuts and produced colours which are truly needed. In the manufacture, we have chosen high quality materials looking for maximum user comfort in order to eliminate friction caused by long use. In our range, the concept of usability is what most prevails and our mission is to continue to provide a totally different user experience, promoting feelings of joy and well-being when use our products.*

*This year, TH Clothes introduced a new parka and regular colours in the technical t-shirt in order to maximize its offer to new market demands.*



**Cubism:** Artistic movement and aesthetic theory of the plastic arts and drawing. It is characterized by the use of geometric forms, such as cubes, triangles and rectangles. It was born in France and knew its apogee between 1907 and 1914.







**WE <3  
SPORTS**

ZERO FRICTION / LIGHTNESS / COMFORT

# Nicosia

men's sports t-shirt

125 G/M<sup>2</sup>



- White 
- Black 
- Royal Blue 
- Neon Green 
- \* Neon Yellow 
- \* Neon Orange 
- New! Red 
- New! Purple 
- New! Navy Blue 

100% polyester jersey  
 Short sleeved  
 Reinforcing tape at neck  
 Double stitch on sleeves and bottom of article



SIZES WIDTH / HEIGHT					
S	M	L	XL	XXL	
50/68 cm	53/71 cm	55/74 cm	59/77 cm	61/80 cm	

\* limited to existing stock

# Nicosia Women

women's sports t-shirt

125 G/M<sup>2</sup>



- White
- Black
- Royal Blue
- Neon Green
- Neon Yellow \*
- Neon Orange \*
- Neon Fuchsia
- New! Red
- New! Purple
- New! Navy Blue



100% polyester jersey  
 Short sleeved  
 Reinforcing tape at neck  
 Double stitch on sleeves and bottom of article  
 Slightly fitted



TAMANHOS LARGURA / ALTURA

S	M	L	XL	XXL
44/62 cm	47/64 cm	49/66 cm	51/68 cm	53/70 cm

\* limited to existing stock

# Riga

unisex sports trousers \*

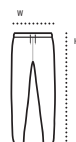
260 G/M<sup>2</sup>



360°



60% cotton  
40% polyester  
Elasticated waist  
2 Side pockets and 1 rear pocket  
Tightening drawstring at the waist  
Tight cut at bottom of article



SIZES WIDTH / HEIGHT

XS	S	M	L	XL	XXL
33/104 cm	36/105 cm	38/106 cm	40/107 cm	42/108 cm	45/109 cm

\* limited to existing stock



# Brussels

unisex padded down parka

New!



WARM PADDED HOOD WITH DRAWSTRINGS



Black

Navy Blue

100% polyester  
Waterproof zippers  
Elasticated cuffs  
Inner pockets

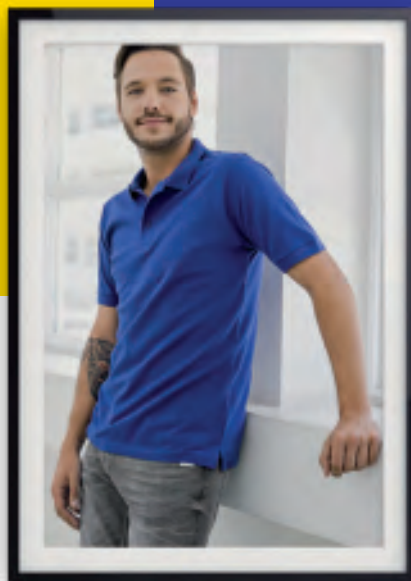


SIZES WIDTH / HEIGHT

S	M	L	XL	XXL
57/89 cm	59,5/93 cm	61,5/96 cm	63,5/99 cm	65,5/102 cm

*Since its invention in the 19th century, polo shirts have evolved exponentially in terms of use. In addition to its common use linked to sports, in the promotional market polo shirts are winning more supporters concerning uniforms and events which are characterized by sophistication.*

*In 2019, we give concise answers again. The Dhaka polo shirt is a mixed result of many requests and TH Clothes DNA, featuring a long-sought solution and a discreet and elegant design.*



**Neoplasticism:** *It was created to designate an art style characterized by geometric abstractionism. Neoplasticism is inherent in the work of the painter Piet Mondrian, was created by him in 1917 and widely diffused and discussed through the magazine "De Stijl".*

A man with short brown hair is wearing a white polo shirt. He is looking slightly to his left. The background is a vibrant, abstract geometric pattern with large triangles in red, yellow, and blue, separated by thick black lines. The overall aesthetic is modern and energetic.

**WORK +  
FUN**

QUALITY / PRICE / DURABILITY / DETAIL / WIDE COLOUR RANGE / SUPREME FINISHING

# Dhaka

men's polo shirt

195 G/M<sup>2</sup>

New!



ELEGANT SINGLE  
WELT POCKET



100% cotton piqué  
 Stylish Rib Collar and Cuffs  
 Reinforcing tape at neck  
 Reinforced placket with 2 matching coloured buttons  
 Single welt pocket in the front  
 Side Slits  
 Extra Button on interior seam  
 Cut and sewn

\* 85% cotton / 15% viscose



SIZES WIDTH / HEIGHT

S	M	L	XL	XXL
46/70 cm	50/72 cm	54/74 cm	58/75,5 cm	61/77,5 cm





# Adam

men's polo shirt

195 G/M<sup>2</sup>



**10 NEW COLOURS:**



100% Cotton piqué  
 Rib collar and cuffs  
 Reinforcing tape at neck and placket  
 With 3 matching coloured buttons  
 Side slits  
 Extra button on interior seam  
 Cut and sewn



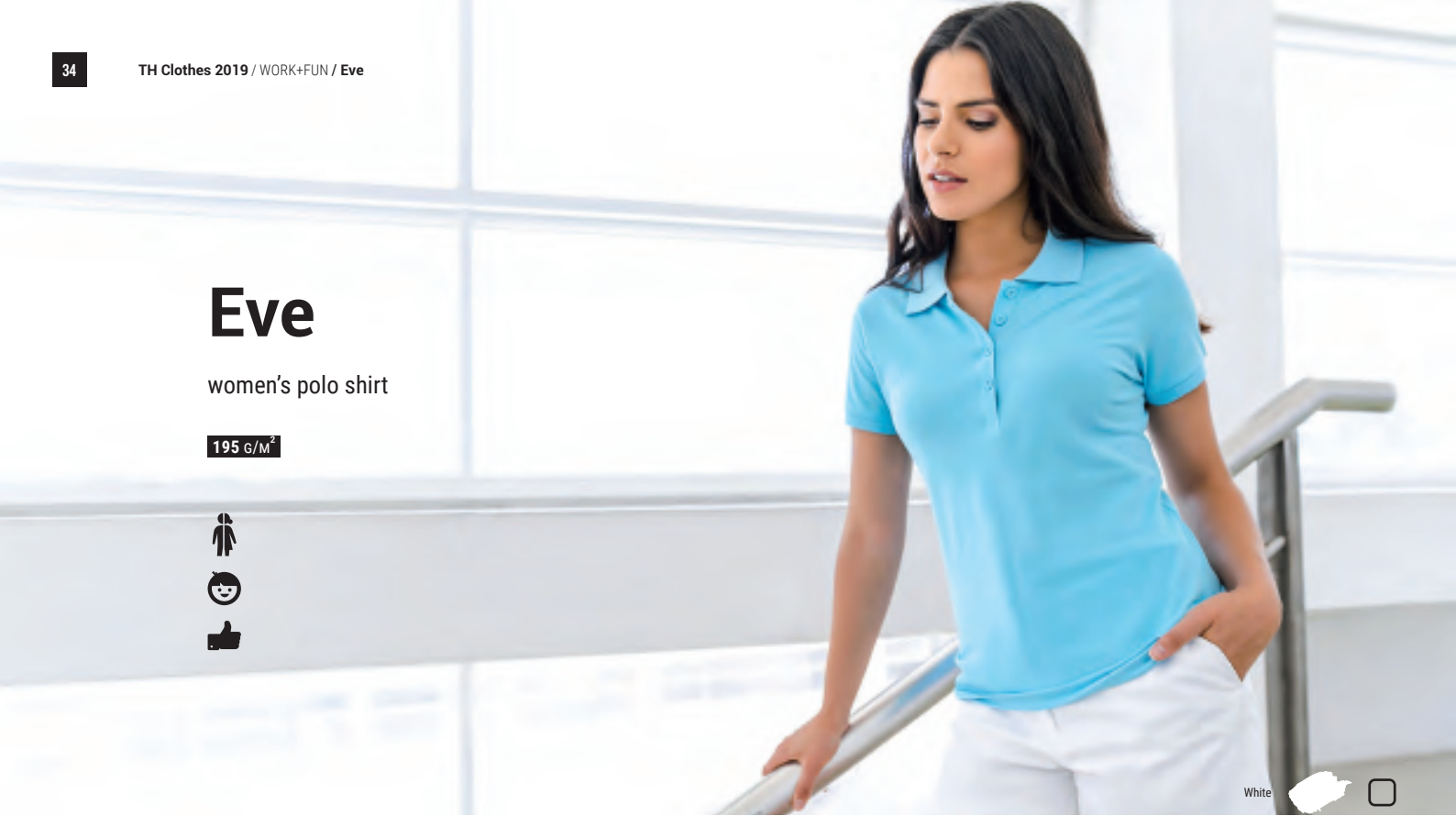
SIZES WIDTH / HEIGHT						
S	M	L	XL	XXL	3XL	4XL#
46/67,5/70 cm	50/69,5/72 cm	54/71,5/74 cm	58/73/75,5 cm	61/75/77,5 cm	64/78,5/82 cm	68/83/85,5 cm

\* 85% cotton / 15% viscose  
 # only available in White, Black, Navy Blue and Grey Melange

# Eve

women's polo shirt

195 g/M<sup>2</sup>



- White 
- Black 
- Sand 
- Yellow 
- Orange 
- Fuchsia 
- Red 
- Burgundy 
- Brown 
- Navy Blue 
- Royal Blue 
- Aqua 
- Light Blue 
- Mint 
- Apple Green 
- Kelly Green 
- Grey 
- \* Grey Melange 



100% Cotton Piqué  
 Rib Collar and Cuffs  
 Reinforcing tape at neck and placket with 4 matching coloured buttons  
 Extra Button on interior seam  
 Cut and sewn



SIZES WIDTH / HEIGHT				
S	M	L	XL	XXL
40/60 cm	43/61 cm	46/63 cm	49/65 cm	52/68 cm

\* 85% cotton / 15% viscose

# Monaco

men's polo shirt

240 G/M<sup>2</sup>



STYLISH COLLAR

REMOVABLE  
VISIBLE LABEL

-  White
-  Black
-  Red
-  Royal Blue
-  Eclipse Blue
-  Grey Melange \*

- 100% Cotton Piqué
- Stylish Rib Collar and Cuffs
- Reinforcing tape at neck
- Reinforced placket with 3 matching coloured buttons
- Side Slits
- Extra Button on interior seam
- Cut and sewn
- Removable label

\* 85% cotton / 15% viscose



SIZES WIDTH / HEIGHT

S	M	L	XL	XXL
46/70 cm	50/72 cm	54/74 cm	58/75,5 cm	61/77,5 cm



**Rome and Rome Women are now one of the best selling contrastive polo shirts.** In 2019, we decided to add three new colour combos, adding more solutions and also different color dynamics.




# Rome

men's bicolor polo shirt

195 G/M<sup>2</sup>

100% Cotton Piqué  
 Rib Collar and Cuffs  
 Contrasting details on collar, placket and sleeve  
 Reinforced placket  
 Extra Button on interior seam  
 Short sleeved • Side slits

SIZES WIDTH / HEIGHT				
S	M	L	XL	XXL
49/71 cm	52/73 cm	55/75 cm	57/77 cm	60/80 cm




Navy Blue + White    White + Navy Blue    Royal Blue + White    Grey Melange + Orange    Red + Grey  
 Grey + Black    Black + Grey    **New!** Apple Green + Navy Blue    **New!** Forest Green + White    **New!** Eclipse Blue + Grey Melange


# Rome Women

women's bicolor polo shirt

195 G/M<sup>2</sup>

100% Cotton Piqué  
 Rib Collar and Cuffs  
 Contrasting details on collar, placket and sleeve  
 Reinforced placket  
 Extra Button on interior seam  
 Short sleeved • Side slits

SIZES WIDTH / HEIGHT				
S	M	L	XL	XXL
42/63 cm	45/65 cm	48/67 cm	51/69 cm	53/71 cm




Navy Blue + White    White + Navy Blue    Royal Blue + White    Grey Melange + Orange    Red + Grey  
 Grey + Black    Black + Grey



# Berlin

men's polo shirt

200 G/M<sup>2</sup>



65% Polyester, 35% Cotton Piqué  
 Rib Collar and Cuffs  
 Reinforcing tape at neck  
 Reinforced placket with 3 matching coloured buttons  
 Extra Button on interior seam  
 Cut and sewn



#### SIZES WIDTH / HEIGHT

S	M	L	XL	XXL
46/70 cm	50/72 cm	54/74 cm	58/75,5 cm	61/77,5 cm



# Bern

men's long sleeve polo shirt

210 G/M<sup>2</sup>



- White
- Black
- Sand
- Orange
- Red
- Burgundy
- Navy Blue
- Royal Blue
- Apple Green
- Grey
- Grey Melange \*



100% Cotton Piqué  
 Rib Collar and Cuffs  
 Reinforcing tape at neck  
 Reinforced placket with 3 matching coloured buttons  
 Side Slits  
 Extra Button on interior seam  
 Cut and sewn



**SIZES WIDTH / HEIGHT**

S	M	L	XL	XXL	3XL
46/67,5/70 cm	50/69,5/72 cm	54/71,5/74 cm	58/73/75,5 cm	61/75/77,5 cm	64/79,5/82 cm

\* 85% cotton / 15% viscose

# Bern Women

women's long sleeve  
polo shirt

210 G/M<sup>2</sup>



100% Cotton Piqué  
Rib Collar and Cuffs  
Reinforcing tape at neck  
Reinforced placket with 4 matching coloured buttons  
Side Slits  
Extra Button on interior seam  
Cut and sewn



SIZES WIDTH / HEIGHT

S	M	L	XL	XXL
40/62 cm	43/64 cm	46/66 cm	49/68 cm	52/70 cm

\* 85% cotton / 15% viscose



# POLO SHIRTS

WORK  
+ FUN



EVE



ADAM



ROME



BERLIN

**POLO SHIRTS  
ARE WINNING  
MORE FANS**

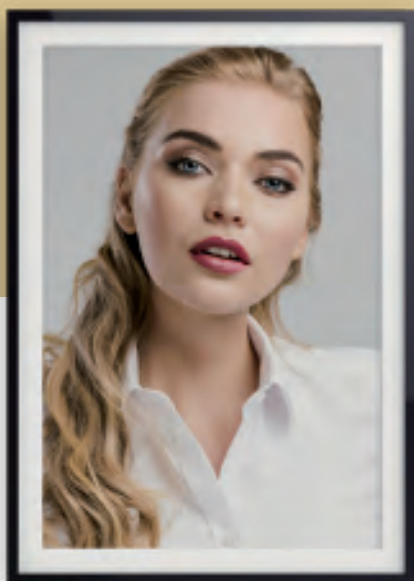
*concerning uniforms  
and events which  
are distinguished  
by sophistication*

**NEW!  
DHAKA**

*men's polo shirt with single  
welt pocket in the front*



*Corporate uniforms today play an important role in modern business life. It is through them that many companies leave their first business card, showing the concern of the company with the well-being of employees and creating a more professional environment. In this way, your employees will feel part of a team. This type of apparel also allows a limitation of individual styles in the companies and promotes the saving of time and money for the employees, since they do not need to waste time and money with the concern of the adequacy of their own clothing to the needs of the company.*



**Surrealism:** *It was par excellence the modern artistic current of the representation of the irrational and the subconscious. Its origins lie in Giorgio De Chirico's dadaism and metaphysical painting, but Salvador Dalí was one of the movement's most prominent artists.*



# CORPORATE



CUT INNOVATION / MODERN CUT / COMFORT / ATTRACTIVE PRICE

# Batalha

men's long sleeve poplin shirt

115 g/M<sup>2</sup>

New!



65% cotton, 35% polyester  
Adjustable 2 button cuffs  
7 button placket



SIZES WIDTH / HEIGHT

S	M	L	XL	XXL
49/75 cm	52/76 cm	56/77 cm	59/78 cm	62/79 cm

# Batalha Women

women's long sleeve poplin shirt

115 G/M<sup>2</sup>

New!



-  White
-  Black
-  Sky Blue

65% cotton, 35% polyester  
7 button placket



SIZES WIDTH / HEIGHT

S	M	L	XL	XXL
46/67 cm	49/69 cm	53/71 cm	56/72 cm	59/73 cm

# Tokyo

men's long sleeve oxford shirt

130 G/M<sup>2</sup>



White 

Sky Blue 

New! Black 

70% cotton / 30% polyester  
 Left side chest pocket  
 2 button collar  
 Adjustable 2 button cuffs  
 7 button placket



SIZES WIDTH / HEIGHT

S	M	L	XL	XXL
54/77 cm	58/78 cm	61/79 cm	64/80 cm	67/81 cm

# Tokyo Women

women's long sleeve oxford shirt

130 G/M<sup>2</sup>



White

Sky Blue

70% cotton / 30% polyester  
 Slim fit  
 Adjustable 2 button cuffs  
 7 button placket  
 2 pleats on the back and the front



SIZES WIDTH / HEIGHT

S	M	L	XL	XXL
46/67 cm	49/69 cm	53/71 cm	56/72 cm	59/73 cm

# London

men's short sleeve oxford shirt

130 G/M<sup>2</sup>



White



Sky Blue



70% cotton / 30% polyester  
 Left side chest pocket  
 2 button collar  
 7 button placket



SIZES WIDTH / HEIGHT

S	M	L	XL	XXL
49/76 cm	52/77 cm	56/78 cm	59/79 cm	62/80 cm



# London Women

women's short sleeve oxford shirt

130 G/M<sup>2</sup>



70% cotton / 30% polyester  
 7 button placket  
 2 pleats on the back and front



SIZES WIDTH / HEIGHT

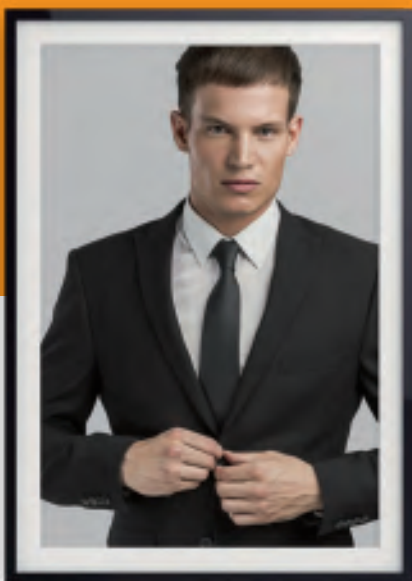
S	M	L	XL	XXL
46/67 cm	49/69 cm	53/71 cm	56/72 cm	59/73 cm

*The corporate uniforms takes today an important role in modern business life. It is through it that many companies leave their first business card, showing the company's concern for the well-being of employees and creating a more professional environment.*

*This way, your employees will feel-part of a team. This type of clothing also allows a limitation of individual styles in business and promotes saving time and money for employees, as it will not need to waste time and money with concern the adequacy of their own clothing business needs. Finally, corporate uniforms are increasingly taking to adapt to fashion trends, causing a sense of modernity and motivation in employees.*

*The Selection range of TH Clothes is essentially characterized by the concern to ensure that all companies can build a modern corporate visual, effective and lasting the best price. In 2018, the introduction of the San Marino t-shirt, unique in the promotional market, was the presentation of an exquisite solution for customers looking to be at the forefront. Gifted with extremely high quality finishes, a modern cut and a stylish collar, it revolutionized the most diverse markets.*

*In 2019, we have broadened the range of colors and introduced a round-neck version of Milan, the Milan RN.*



**Symbolism:** Movement that emerged in France at the end of the nineteenth century as opposed to realism, naturalism and positivism of the time. Moved by the romantic ideals, it was based mainly on subjectivity, on the irrational and on synaesthesia.





*selection*

QUALITY OF MATERIALS / EXCELLENCY IN TOUCH / MODERN STYLE / COMFORT / EXCLUSIVITY

# Milan RN

men's round neck jumper

220 G/M<sup>2</sup>

New!



70% cotton / 30% polyamide  
Rib cuffs and bottom  
Fully-fashion inserted sleeves



SIZES WIDTH / HEIGHT

S	M	L	XL	XXL
50/66 cm	53/68 cm	56/70 cm	59/72 cm	62/74 cm



# Lisbon Blazer

men's slim fit suit blazer \*



# Lisbon Trousers

men's slim fit suit trousers \*



# Lisbon

men's suit



**Exterior:** 65% polyester, 33% rayon, 2% spandex / **Lining:** 100% polyester

**Jacket:** Slim fit cut, closes with 2 buttons / 2 pockets with flap  
1 chest pocket and 2 interior pockets / Lapel with Innovative cut

**Trousers:** 2 "V" pockets and 2 rear inserted pockets



**SIZES WIDTH / HEIGHT**

<b>46</b>	<b>48</b>	<b>50</b>	<b>52</b>	<b>54</b>	<b>56</b>
50/70 cm	52/71,5 cm	54/73 cm	56/74,5 cm	58/76 cm	60/77,5 cm

**SIZES WIDTH / HEIGHT**

<b>38</b>	<b>40</b>	<b>42</b>	<b>44</b>	<b>46</b>	<b>48</b>
83,5/110 cm	87,5/110 cm	91,5/110 cm	95,5/110 cm	99,5/110 cm	103,5/110 cm

\* Sold separately



**"V-neck" jumpers are essential to classy corporate looks.**  
The Milan are top articles that assume high quality details and finishing as well as materials.



# Milan

men's "v-neck" jumper

**220 G/M<sup>2</sup>**

70% cotton, 30% polyamide  
Rib cuffs and bottom  
Fully-fashion inserted sleeves

SIZES WIDTH / HEIGHT				
S	M	L	XL	XXL
50/66 cm	53/68 cm	56/70 cm	59/72 cm	62/74 cm



# Milan Women

women's "v-neck" jumper

**220 G/M<sup>2</sup>**

70% cotton, 30% polyamide  
Rib cuffs and bottom  
Fully-fashion inserted sleeves

SIZES WIDTH / HEIGHT				
S	M	L	XL	XXL
42/60 cm	45/62 cm	48/64 cm	51/66 cm	54/68 cm





**Paris and Paris women.**  
Corporate high end articles with  
TH Clothes strong DNA.





# Paris

men's long sleeve poplin shirt

**115 G/M<sup>2</sup>**

68% cotton / 28% polyamide / 4% spandex  
 Slim fit  
 Adjustable 2 button cuffs  
 7 button placket with matching coloured buttons

SIZES WIDTH / HEIGHT				
S	M	L	XL	XXL
49/75 cm	52/76 cm	56/77 cm	59/78 cm	62/79 cm



# Paris Women

women's long sleeve poplin shirt

**115 G/M<sup>2</sup>**

68% cotton / 28% polyamide / 4% spandex  
 Slim fit  
 Adjustable 2 button cuffs  
 7 button placket with matching coloured buttons  
 2 pleats on the back



SIZES WIDTH / HEIGHT				
S	M	L	XL	XXL
46/67 cm	49/69 cm	53/71 cm	56/72 cm	59/73 cm



# Madrid

men's short sleeve  
poplin shirt

115 G/M<sup>2</sup>



68% cotton / 28% polyamide

4% spandex

Slim fit

7 button placket with matching coloured button



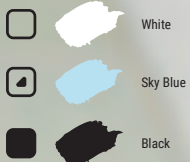
SIZES WIDTH / HEIGHT

S	M	L	XL	XXL
49/75 cm	52/76 cm	56/77 cm	59/78 cm	62/79 cm

# Madrid Women

women's short sleeve poplin shirt

115 G/M<sup>2</sup>



68% cotton / 28% polyamide / 4% spandex  
 Slim fit  
 7 button placket with matching coloured buttons  
 2 pleats on the back



SIZES WIDTH / HEIGHT

S	M	L	XL	XXL
46/67 cm	49/69 cm	53/71 cm	56/72 cm	59/73 cm

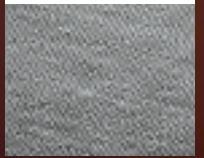
# San Marino

men's t-shirt

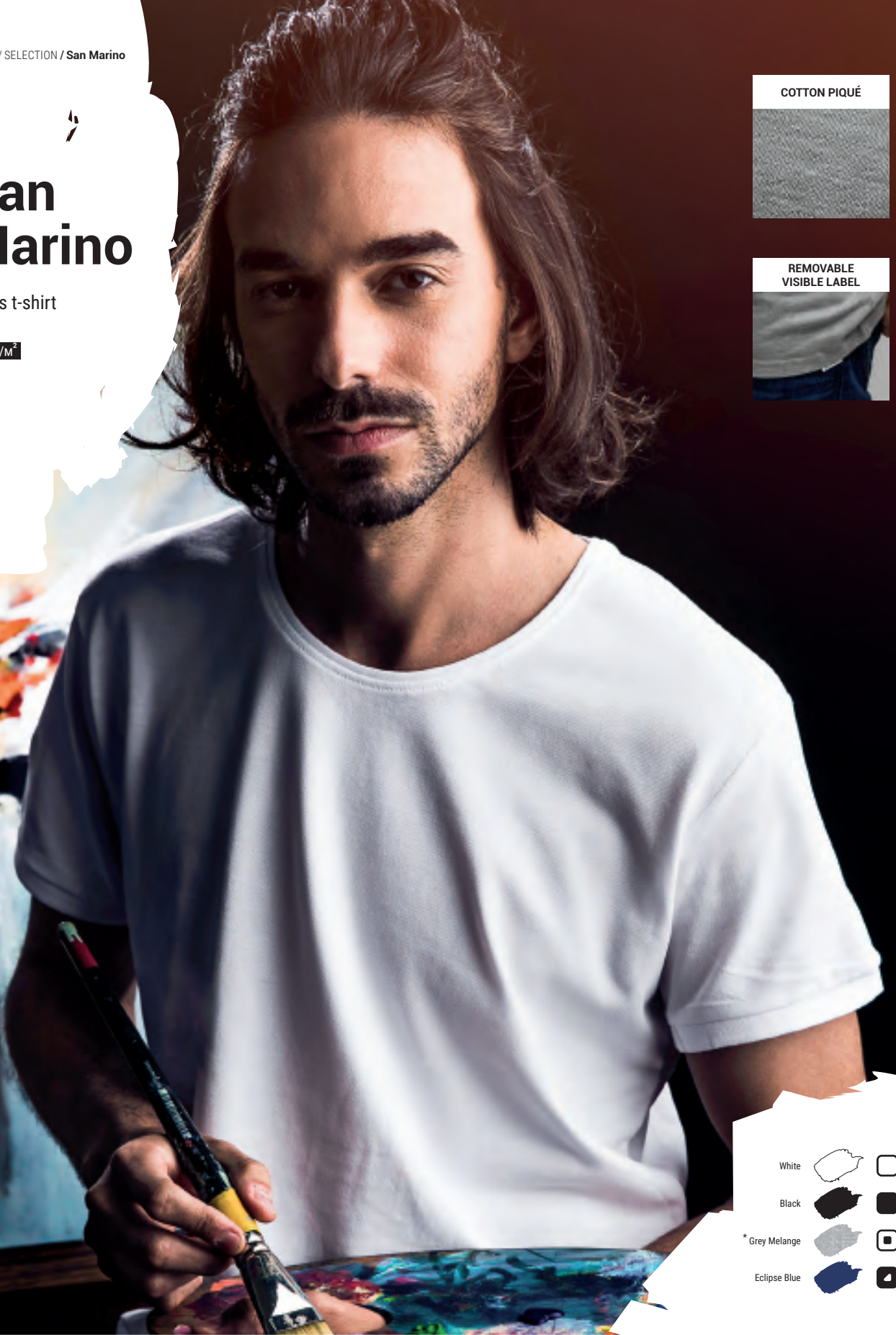
195 G/M<sup>2</sup>







COTTON PIQUÉ



REMOVABLE VISIBLE LABEL



- White 
- Black 
- \* Grey Melange 
- Eclipse Blue 

100% Cotton Piqué  
 Thin 1x1 Rib collar with reinforcing tape  
 Cut and Sewn  
 Rib on the sleeve  
 Removable label  
 No label on the collar



SIZES WIDTH / HEIGHT

S	M	L	XL	XXL
50/70 cm	52/72 cm	54/74 cm	57/75 cm	60/76 cm

\* 85% cotton / 15% viscose

# SELECTION

SUITS,  
SHIRTS  
& JUMPERS

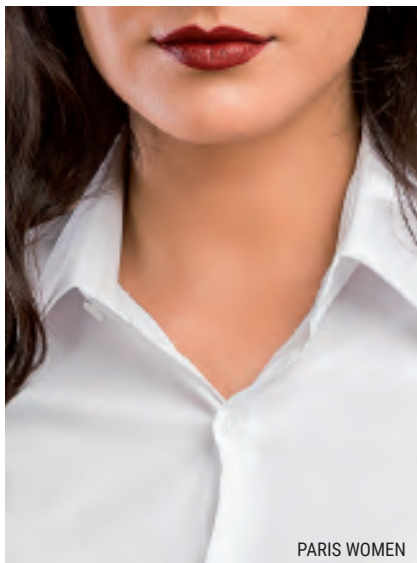


## NEW! MILAN RN

*men's round neck jumper with  
fully-fashion inserted sleeves*



MADRID



PARIS WOMEN

**CORPORATE UNIFORMS  
HAVE AN IMPORTANT ROLE  
IN MODERN BUSINESS LIFE**

*it is through them that many  
companies show their first  
business card*

LISBON



*Sweatshirts have been a part of our daily lives for decades. They are the perfect piece of clothing for different environments and purposes. Their heating capacity, comfort and versatility are perfect features to make them an important part of many uniforms. On the other hand, these same features also make them desirable for less formal and more relaxed environments. For a very cool style, just wear it with jeans or shorts. Many designers often have new versions of sweatshirts in their autumn/winter collections, making them a must-have of the season.*

*The hooded version dates back to the style introduced in medieval Europe by the monks in their work abroad. In New York, workers wore them in lower temperature environments. The success of the hood was confirmed later in 1970 with the explosion of Hip-Hop and urban culture. Today, its success is reflected by the widespread use in many different environments and sports, from festivals to extreme sports.*

*In 2019, TH Clothes explodes in the Phoenix sweatshirt adding 10 new colours!*



**Photography:** Throughout history, several individuals have been adding concepts and processes that gave birth to photograph as we know it. The oldest of these concepts was the darkroom, used by the artists in the sixteen century to sketch paintings. Today, each of us carries in our pocket a camera and is free to capture his own "art".

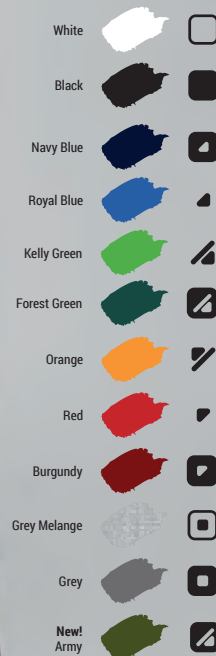
# Cool sweats

COMFORT / HEATING / COOLNESS / USABILITY / RESISTANCE

# Delta

unisex sweatshirt

300 g/M<sup>2</sup>



50% cotton  
50% polyester  
Carded interior  
Elastane rib and double stitch on cuffs,  
collar and bottom of article  
Reinforcing tape at neck



#### SIZES WIDTH / HEIGHT

S	M	L	XL	XXL	3XL#	4XL#
52/67 cm	55/69 cm	58/71 cm	61/73 cm	64/75 cm	67/77 cm	70/79 cm

#Only available in Black, Navy Blue and Grey Melange



**DID YOU KNOW?**

The Phoenix sweatshirt represents the rebirth of TH Clothes as a brand after a gap of some years. With it, rose the certainties and convictions that the mission of TH Clothes as a brand was valid.

# Phoenix

unisex hooded sweatshirt

320 G/M<sup>2</sup>



- White
- Black
- Navy Blue
- Royal Blue
- Caribbean Green
- Kelly Green
- Lemon
- Orange
- Red
- Grey Melange

**10 NEW COLOURS:**

- New! Pastel White
- New! Pastel Yellow
- New! Pastel Salmon
- New! Pastel Pink
- New! Pastel Blue
- New! Pastel Green
- New! Army
- New! Purple
- New! Ash
- New! Mustard



50% cotton  
 50% polyester  
 Carded interior  
 Rib 1x1 on cuffs and bottom of article •  
 Kangaroo pocket  
 Hood with eyelets and tone on tone drawstring



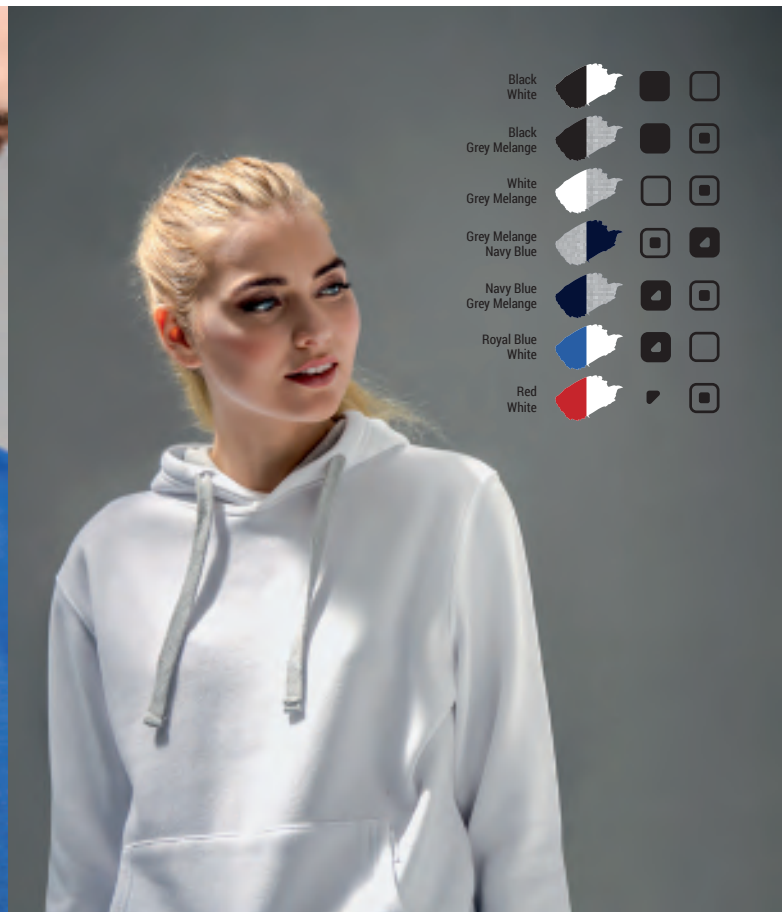
**SIZES WIDTH / HEIGHT**

XS	S	M	L	XL	XXL
49/64 cm	52/66 cm	55/68 cm	58/70 cm	61/72 cm	64/74 cm

# Moscow

unisex bicolor sweatshirt

320 G/M<sup>2</sup>



50% cotton  
 50% polyester  
 Carded interior  
 Rib 1x1 on cuffs and bottom of article  
 Kangaroo pocket  
 Hood and drawstrings in contrasting colour  
 Removable label



SIZES WIDTH / HEIGHT

S	M	L	XL	XXL
52/66 cm	55/68 cm	58/70 cm	61/72 cm	64/74 cm

# Amsterdam

men's hooded full ziped sweatshirt

320 G/M<sup>2</sup>



-  Black
-  Grey Melange
-  Navy Blue Melange
-  Red Melange
-  New! Navy Blue
-  New! Red

50% cotton  
 50% polyester  
 2 kangaroo pockets  
 Lined hood with drawstring  
 Carded interior  
 Covered plastic zip



SIZES WIDTH / HEIGHT

S	M	L	XL	XXL
52/70 cm	55/72 cm	58/74 cm	61/76 cm	64/78 cm

# Amsterdam Women

women's hooded full zipped sweatshirt

320 g/m<sup>2</sup>



50% cotton  
50% polyester  
2 kangaroo pockets  
Lined hood with drawstring  
Carded interior  
Covered plastic zip



SIZES WIDTH / HEIGHT

S	M	L	XL	XXL
46/64 cm	49/66 cm	52/68 cm	55/70 cm	58/72 cm

# Budapest

unisex sweatshirt with 1/4 zip

320 G/M<sup>2</sup>



-   Black
-   Anthracite Melange
-   Navy Blue Melange
-   New! Navy Blue
-   New! Grey Melange

50% cotton  
 50% polyester  
 Carded interior  
 Matching colored 1/4 zip



**SIZES WIDTH / HEIGHT**

S	M	L	XL	XXL
51/71 cm	54/73 cm	57/75 cm	60/77 cm	63/79 cm

*Polar fleeces and windbreakers are essential parts of the winter promotional market.*

*TH Clothes' range presents several solutions focused on the needs of markets, comfort, variety and versatility. We introduced products that are easily distinguished by quality features, price and usability. Just touch them! Also, the brand presents different colour solutions for both men and women.*



**Pop Art:** *Pop Art intended to state the existence of a crisis in art (in the middle of the 20th century). It wanted to demonstrate by its works the massification of the popular capitalist culture. He sought the aesthetics of the masses, trying to find the definition of what pop culture would be, approaching what is often called kitsch.*

WINTER

≡ WONDERLAND ≡

COMFORT / HEATING / VERSATILITY / TOUCH

# Helsinki

men's polar fleece jacket

260 g/m<sup>2</sup>



100% polyester  
 Matching coloured zip  
 Side pockets  
 Elasticated cuffs  
 Inside flap behind the zipper for more comfort



SIZES WIDTH / HEIGHT

S	M	L	XL	XXL
51/69 cm	54/71 cm	57/73 cm	60/75 cm	63/77 cm



# Helsinki Women

women's polar fleece jacket

260 G/M<sup>2</sup>



-  White
-  Black
-  Medium Grey
-  Navy Blue
-  Fuchsia
-  Forest Green



100% polyester  
 Matching coloured zip  
 Side pockets  
 Elasticated cuffs  
 Inside flap behind the zipper for more comfort  
 Slim Fit



SIZES WIDTH / HEIGHT

S	M	L	XL	XXL
44/62 cm	46/64 cm	48/66 cm	51/68 cm	54/70 cm

# Vienna

unisex polar fleece with 1/4 zip

260 g/m<sup>2</sup>



100% polyester  
Matching colored 1/4 zip  
Elasticated cuffs



SIZES WIDTH / HEIGHT

S	M	L	XL	XXL
51/69 cm	54/71 cm	57/73 cm	60/75 cm	63/77 cm

# Dublin

unisex windbreaker  
with mesh lined hood

65 G/M<sup>2</sup>



VISIBLE REMOVABLE LABEL

-   Black
-   Red
-   Navy Blue
-   Royal Blue
-   Apple Green
-   Forest Green

100% taffeta polyester  
hood with tightening stoppers and mesh lining  
side pockets with plastic zip  
elasticated bottom with tightening stoppers  
removable label



SIZES WIDTH / HEIGHT

XS	S	M	L	XL	XXL
53/66 cm	55/68 cm	57/72 cm	59/74 cm	61/76 cm	63/78 cm

# Prague

unisex windbreaker  
with jersey lining



Exterior - 80 g/m<sup>2</sup>

Lining - 150 g/m<sup>2</sup>

Exterior: 100% polyamide

Lining: 65% polyester - 35% cotton

Exterior: ripstop fabric

Elasticated hood, cuffs and bottom of article

Contrasting lining and zip



SIZES WIDTH / HEIGHT

S	M	L	XL	XXL
55/67 cm	57/69 cm	59/71 cm	61/73 cm	63/75 cm

# WINTER WONDERLAND

POLAR FLEECE  
& WINDBREAKERS



VIENNA

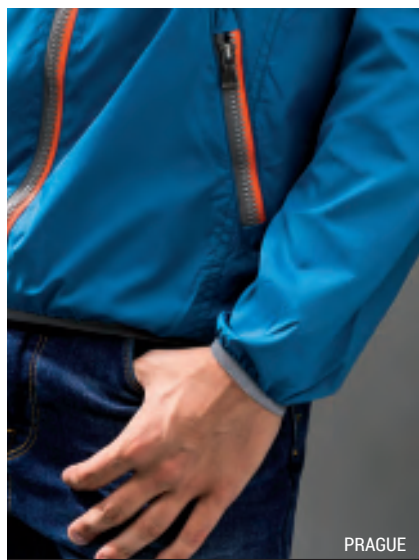


HELSINKI



## DUBLIN

*unisex windbreaker  
with mesh lined hood*



PRAGUE

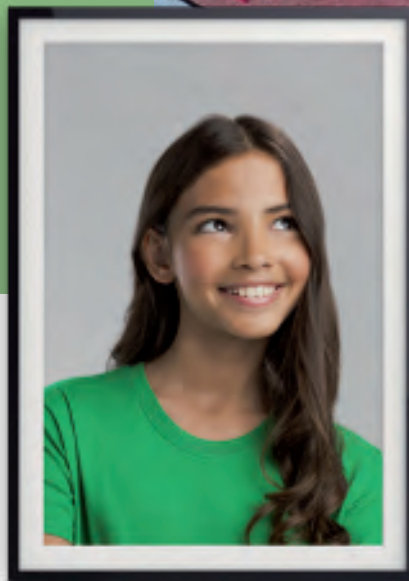
**POLAR FLEECE  
AND WINDBREAKERS  
ARE ESSENTIAL**

*TH Clothes' range presents  
several solutions focused  
on the needs of markets*

*TH Clothes considers children articles highly important parts within its range of products.*

*The responsibility of owning children articles is unquestionably a commitment to quality. The OEKO-TEX certification attests to the quality of the chemicals used for dyeing the meshes of TH Clothes, so this way children can wear our products safely.*

*Our kids' articles are the result of the application of international certification standards. Also, TH Clothes bet on color increase in its product range for children in order to fulfil the demands of specific markets.*



**Street Art:** *An artistic expression that emerged in the United States in the 70's with a dynamic and ephemeral character. The themes used by street performers are quite diverse, which use the urban environment to express their art and ideologies.*



# NATURAL KIDS



CERTIFICATION / RELIABILITY / QUALITY / VERSATILITY

# Quito

kid's t-shirt

150 g/m<sup>2</sup>



White		<input type="checkbox"/>
Black		<input type="checkbox"/>
Yellow		<input checked="" type="checkbox"/>
Orange		<input type="checkbox"/>
Red		<input type="checkbox"/>
Fuchsia		<input type="checkbox"/>
Orchid Pink		<input type="checkbox"/>
Navy Blue		<input type="checkbox"/>
Eclipse Blue		<input type="checkbox"/>
Royal Blue		<input type="checkbox"/>
Aqua		<input type="checkbox"/>
Mint		<input type="checkbox"/>
Atoll Blue		<input type="checkbox"/>
Apple Green		<input type="checkbox"/>
Kelly Green		<input type="checkbox"/>

100% Jersey Cotton  
 1x1 Rib collar with reinforcing jersey tape  
 Double stitch on sleeves and bottom of article  
 Cut and sewn



SIZES WIDTH / HEIGHT

2	4	6	8	10	12
31/42 cm	34/45 cm	37/48 cm	40/51 cm	43/55 cm	46/59 cm








# Ankara Kids

kids t-shirt

190 G/M<sup>2</sup>



-   White
-   Orange
-   Red
-   Fuchsia
-   Navy Blue
-   Atoll Blue
-   Apple Green
-   Yellow
-   New! Black

100% jersey cotton  
 1x1 rib collar with reinforcing jersey tape  
 double stitch on sleeves and bottom of article  
 cut and sewn



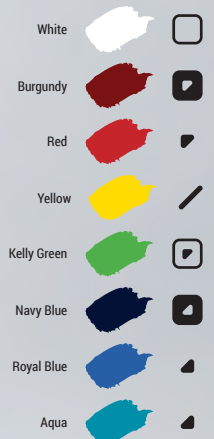
SIZES WIDTH / HEIGHT

2	4	6	8	10	12
31/42 cm	34/45 cm	37/48 cm	40/51 cm	43/55 cm	46/59 cm

# Adam Kids

kid's polo shirt

195 g/m<sup>2</sup>



100% cotton piqué  
rib collar and cuffs  
reinforcing tape at neck  
reinforced placket with 3 matching coloured buttons  
side slits  
extra button on interior seam  
cut and sewn



SIZES WIDTH / HEIGHT

	2	4	6	8	10	12
	31/45/47	34/48/50	37/51/53	40/54/56	43/59/61	46/63/65
	cm	cm	cm	cm	cm	cm



# Phoenix Kids

kid's unisex hooded sweatshirt

320 G/M<sup>2</sup>



-  White
-  Black
-  Fuchsia
-  Navy Blue
-  Aqua
-  Grey Melange

50% cotton  
 50% polyester  
 Carded interior  
 Rib 1x1 on cuffs and bottom of article  
 Kangaroo pocket  
 Lined hood  
 Hood according to the European Union law



SIZES WIDTH / HEIGHT					
2	4	6	8	10	12
37,5/41 cm	39,5/44 cm	41,5/47 cm	43,5/51 cm	46,5/55 cm	48,5/58,5 cm

# Dublin Kids

kid's unisex windbreaker with mesh lined hood

65 G/M<sup>2</sup>



VISIBLE REMOVABLE LABEL

- Black
- Red
- Navy Blue
- Royal Blue
- Apple Green
- Forest Green

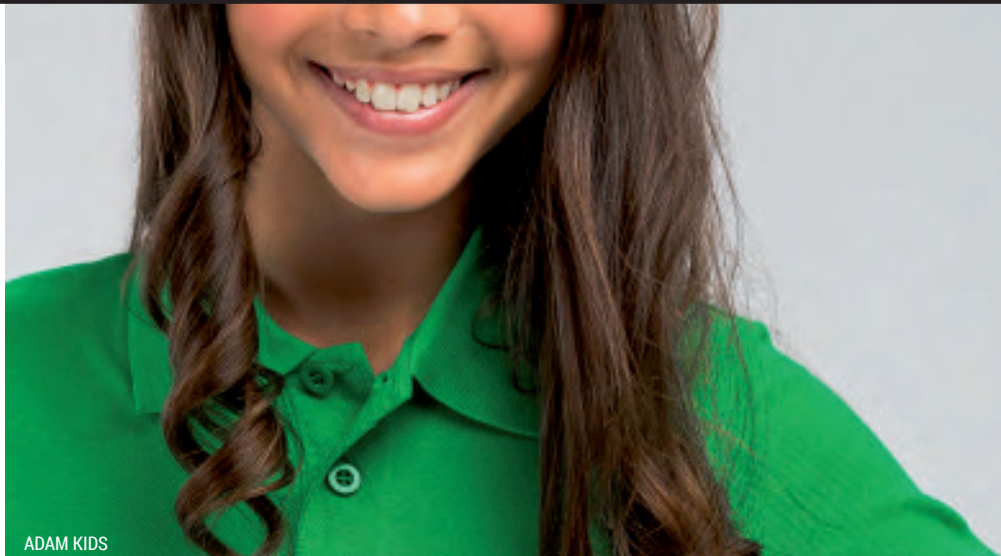
100% taffeta polyester  
 Hood with mesh lining  
 Side pockets with plastic zip  
 Elasticated bottom  
 Removable label



SIZES		WIDTH / HEIGHT				
		6	8	10	12	14
		38/50 cm	42/54 cm	45/58 cm	48/62 cm	51/66 cm

# KIDS

FUN  
WITH  
COLOURS



ADAM KIDS



ANKARA KIDS



DUBLIN KIDS

**CHILDREN ARTICLES ARE  
HIGHLY IMPORTANT  
WITHIN OUR RANGE  
OF PRODUCTS**

*it's unquestionably a  
commitment to quality*



## TOP SELLER PHOENIX KIDS

*kids' unisex hooded sweatshirt  
with kangaroo pocket*



*Workwear articles created by TH Clothes represent the basic needs of this market segment. In line with other articles in this catalog, the brand now has the ability to hold a complete set of high-quality work uniforms designed to workshops, civil construction, among others, with a solid and competent color range.*



**Abstract Expressionism:** *It began in New York, shortly after World War II, and was the first North American pictorial style to gain international recognition. It combines the emotional intensity of German expressionism with the antifigurative aesthetics of the abstract Schools of Europe.*



# GOOD WORK

RESISTANCE / COMFORT / QUALITY / HIGH-VISIBILITY

# Berlin

men's polo shirt

200 g/m<sup>2</sup>



65% polyester, 35% cotton piqué  
 Rib collar and cuffs  
 Reinforcing tape at neck  
 Reinforced placket with 3 matching coloured buttons  
 Extra button on interior seam  
 Cut and sewn



#### SIZES WIDTH / HEIGHT

S	M	L	XL	XXL
46/70 cm	50/72 cm	54/74 cm	58/75,5 cm	61/77,5 cm



# Stockholm

workwear padded bodywarmer



-   Black
-   Metallic Grey
-   Navy Blue

100% polyester  
 Polar fleece collar  
 6 pockets: 5 on the front, including 2 with inserted zip  
 and 1 cellphone pocket  
 1 interior pocket  
 Elastic band on the sides for a better fit  
 Interior customization zip at lower back



**SIZES WIDTH / HEIGHT**

S	M	L	XL	XXL	3XL
56/69 cm	58/71 cm	60/73 cm	62/75 cm	64/77 cm	66/79 cm

# Warsaw

men's workwear trousers

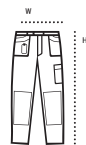
250 g/M<sup>2</sup>

# Warsaw Protect

protective kneepads



80% cotton, 20% polyester  
8 Pockets  
Reflexive details on front  
3 pockets with Velcro closing  
Front pocket suitable for cellphone  
Oxford pocket for kneepads  
Elasticated waist  
Plastic clip on the waist



SIZES WIDTH / HEIGHT

XS/36	S/38	M/40	L/42	XL/44	XXL/46
36/106 cm	38/108 cm	40/110 cm	42/112 cm	44/114 cm	46/116 cm

# Zagreb Work

men's high visibility softshell

320 G/M<sup>2</sup>



Neon  
Yellow

100% polyester – three layers  
Water repellent coating - class III  
Fleece lined  
TPU coating  
2 front zip pockets and one diagonal chest pocket  
Adjustable cuffs with a Velcro strap  
Removable hood with drawstring, adjustable stoppers  
and Velcro strip which fits inside the collar  
Rounded lower back



SIZES WIDTH / HEIGHT

S	M	L	XL	XXL
54/72 cm	57/74 cm	60/76 cm	63/78 cm	66/80 cm

Coats are essential items to meet the needs of the promotional markets of different segments.

In 2019, TH Clothes features 2 new coats and 1 parka: Oporto and Skopje, to fill a more elegant gap in its range, and Brussels, a long multipurpose parka for the corporate and sports markets.



# JACKETS

## ESSENTIAL

**Dadaism:** Artistic movement that began during the First World War. It is a loose art form of rationalist moorings, assuming irreverence and free expression of the psychological.



HEATING / QUALITY / PRICE / DETAIL / FINISHING

# Oporto

men's bicolor sportswear jacket

160 g/m<sup>2</sup>

New!



100% polyester  
 Modern cut  
 Light and comfortable  
 Contrasting striped cuffs and bottom  
 2 front pockets  
 1 back pocket for easy customization



SIZES WIDTH / HEIGHT

S	M	L	XL	XXL
54/68 cm	57/70 cm	60/72 cm	63/74 cm	66/76 cm

# Skopje

men's full zip hooded jacket

150 G/M<sup>2</sup>

New!



Black

Navy Blue

*Polyester 300T*  
*95% polyester, 5% spandex*  
*Modern cut*  
*Light and comfortable*  
*Hood with stoppers*  
*Inner pockets*



SIZES WIDTH / HEIGHT

S	M	L	XL	XXL
51/43 cm	54/45 cm	57/47 cm	59/49 cm	61/51 cm

# Brussels

unisex padded down parka

New!



WARM PADDED HOOD WITH DRAWSTRINGS



Black



Navy Blue



- 100% polyester
- Waterproof zippers
- Elasticated cuffs
- Inner pockets



**SIZES** WIDTH / HEIGHT

S	M	L	XL	XXL
57/89 cm	59,5/93 cm	61,5/96 cm	63,5/99 cm	65,5/102 cm



# Zagreb

men's softshell  
with removable hood

280 g/M<sup>2</sup>



96% polyester, 4% spandex with two layers

Water repellent coating - class III

Fleece Lining

2 front zip pockets and one diagonal chest pocket

Adjustable cuffs with a Velcro strap

Removable hood with drawstring, adjustable  
stoppers and Velcro strip which fits inside the collar

Rounded lower back



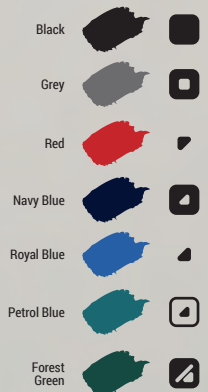
SIZES WIDTH / HEIGHT

S	M	L	XL	XXL
54/72 cm	57/74 cm	60/76 cm	63/78 cm	66/80 cm

# Zagreb Women

women's softshell  
with removable hood

280 g/M<sup>2</sup>



96% polyester, 4% spandex with two layers

Water repellent coating - class III

Fleece Lining

2 front zip pockets and one diagonal chest pocket

Adjustable cuffs with a Velcro strap

Removable hood with drawstring, adjustable

stoppers and Velcro strip which fits inside the collar

Rounded lower back

Slim fit



SIZES WIDTH / HEIGHT

S	M	L	XL	XXL
48/66 cm	51/68 cm	54/70 cm	57/72 cm	60/74 cm

# Liubliana

unisex heavy-weight coat



*Exterior: 100 % polyester pongee 240 and waterproof PVC coating  
 Inside: 100 % taffeta polyester • Filling: polyester 80 g/m2  
 Black fleece lined collar which closes with a Velcro strip • Fold away hood in the collar, adjustable with tightening cords with black stoppers  
 Front opening with flap, zip (in the same colour), Velcro and press studs in black • 2 outside pockets with flap • 2 interior pockets (1 for mobile phones), with Velcro closure • 2x2 rib knit interior cuffs • Adjustable outer cuffs with Velcro straps • Interior customization zip at lower back*



SIZES WIDTH / HEIGHT

XS	S	M	L	XL	XXL
56/76 cm	58/77 cm	60/78 cm	62/79 cm	64/80 cm	66/81

# Copenhagen

unisex padded jacket



Exterior: 100% polimide  
 Lining: 100% polyester  
 Removable hood with fastening chord  
 2 front zipped pockets  
 Elasticated cuffs and bottom of the article  
 Contrasting zip



SIZES WIDTH / HEIGHT

S	M	L	XL	XXL
54/68 cm	56/70 cm	58/72 cm	60/74 cm	62/76 cm

\* limited to existing stock

# Zagreb Work

men's high visibility softshell

320 G/M<sup>2</sup>



Neon  
Yellow

100% polyester – three layers  
Water repellent coating - class III

Fleece lined

TPU coating

2 front zip pockets and one diagonal chest pocket

Adjustable cuffs with a Velcro strap

Removable hood with drawstring, adjustable stoppers  
and Velcro strip which fits inside the collar

Rounded lower back



SIZES WIDTH / HEIGHT

S	M	L	XL	XXL
54/72 cm	57/74 cm	60/76 cm	63/78 cm	66/80 cm

# ESSENTIAL JACKETS

JACKETS  
SOFTSHELLS  
AND  
PARKAS



## NEW! BRUSSELS

*unisex padded down parka*



COPENHAGEN



## NEW! OPORTO

*men's bicolor sportswear jacket  
with modern cut*





LIUBLIANA



ZAGREB WORK



ZAGREB

**IN 2019, TH CLOTHES  
FEATURES 2 NEW JACKETS  
AND 1 PARKA**

*Oporto and Skopje to fill an  
elegant gap in its range and  
Brussels to specific markets*



## **NEW! SKOPJE**

*men's full zip hooded jacket  
light and comfortable*



# Imagined & Designed in Portugal

*The Portuguese DNA is well recognized in the world of textiles. Its success story dates back to the sixteenth century with construction of the sails used by Portuguese ships. Since that time, the quality of construction and the design of Portuguese brands is appreciated all over the world. Today, the Portuguese textiles mean flexibility, speed, consolidated knowledge and innovation. Based on these assumptions, TH Clothes continues the strong focus on product quality and extending its ranges towards a future marked by differentiation and added value at various levels. In 2018, the brand again shows clear signs that its bet on items of exemplary elegance and quality is to maintain, introducing references such as the Monaco polo shirt and the San Marino t-shirt.*



Rome Women women's bicolor polo shirt + Rome men's bicolor polo shirt





*TH Clothes has been building a path full of successes and its recognition in the European markets is already a reality. Like our ancestors, we are committed to conquering the world, leveraged by our perseverance, resilience and conviction that what we are building is something that fully reflects the Portuguese DNA, once a people full of determination and unshakeable beliefs, likewise the "Descobrimentos" era. TH Clothes is growing to be one of the references in promotional markets and it was precisely these values that cemented its range of articles and the global set of tools that we made available to our customers. The growth in both domestic and international markets reflects this and reveals that the focus on quality, elegance, detail and differentiation has been and will continue to be right.*

## Portuguese DNA

---



## In 2018, HOPE Foundation has held a total of 8 health camps sponsored by TH Clothes.

*Four doctors, a nurse and a midwife from HOPE formed a team implemented at Shamitee Medical Center For HOPE to conduct health camps and track as many patients as possible.*

*The main objective of these camps is to identify patients who need specialized care and refer these cases to the HOPE Hospital for treatment, as these patients do not have access to adequate medical care in their villages.*

### **Total scanned patients: 1232**

*Most common diagnoses:*

- Respiratory tract infections in children: 228
- Diarrhea: 272
- Burn injuries: 3
- Urinary tract infections: 136
- Orthopedics: 13
- Gastric diseases: 71
- Diabetes: 96
- Conjunctivitis: 9
- Skin diseases: 87
- Asthma: 40
- Hypertension: 91
- Anaemia: 78
- Hernia: 1
- Cleft palate lip: 5
- Obstetric Fistula: 2
- Prenatal Care: 68
- Postnatal Care: 13
- Pregnancy risk sent to hospital HOPE: 11
- Uterine prolapse: 1
- Others: 7

*Hope and TH Clothes will actively continue their partnership in order to help real people in real need. It's a true honour and pride to make small changes that can transform into huge improvements in people's lives.*

AMI was founded in 1984, with Men at the centre of all its concerns. Since 1987, it has worked in 82 countries around the world, sending hundreds of volunteers and tons of aid (medicines and medical equipment, food, clothes, cars, generators, etc.). In the international area, AMI develops three main types of interventions: Emergency Missions, Development Missions with expatriated teams and International Projects in Partnership with Local Organizations (PIPLO), aiming to adapt its action to the characteristics and needs of the context, assuming to this end a phased intervention, always having the ultimate goal, the sustainability of the development process.

AMI's Solidarity Adventure is a project that allows the direct collaboration of participants in the life of communities, providing them a better future. It is an opportunity to financially support a cause or a project and thus contribute significantly to improving the living conditions of a community with major difficulties. It is the possibility of knowing the daily reality of a remote and isolated area: the way people live, their culture, their problems and work on solutions.

The main objectives of AMI's Solidarity Adventure are:

- to finance development projects;
- to promote the settlement of populations, improving access to health, education / knowledge, entrepreneurship and thus preventing migrations;
- to travel and establish bridges between cultures, allowing the exchange of ideas and mutual knowledge, fundamental foundations for peace in the World.

The areas of projects developed contribute to the Sustainable Development Objectives (SDO) and essentially cover: Health, Education, Environment and Citizenship.

**Now underway:**

Project: Construction School of Gá-Bacar

Location: San Juan Sector, Bolama Region

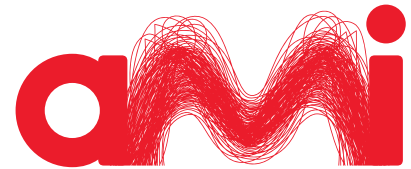
Teaching: Preschool until the 6th year

Direct Beneficiaries: 146 people

138 students (72 boys and 66 girls) + 8 teachers

(4 men and 4 women)

Indirect beneficiaries: the families and communities of the students who attend this school.



School of Gá-Bacar current facilities



*In 2018, TH Clothes became a member of the FAIR WEAR Foundation. This commitment means respecting its code of labour practices based on 8 internationally recognized standards: free choice of work, non-discrimination in employment, child labour, freedom of association and collective bargaining, fair wages, reasonable working hours, hygiene and safety at work and legally recognized contractual relations of employment.*

**OEKO-TEX®**  
CONFIDENCE IN TEXTILES  
**STANDARD 100**  
**6198CIT CITEVE**



Tested for harmful substances.  
[www.oeko-tex.com/standard100](http://www.oeko-tex.com/standard100)

*TH Clothes have always assumed a commitment to quality and innovative design combined with the best price. The proof of that is getting the OEKO TEX Standard 100 certificate which aims to the excellence in the use of controlled substances free of health hazards, as well as non-use of substances prohibited by law. Obtaining this certificate is a worldwide synonym for responsible textile manufacturing and a guarantee for the industry, trade and consumers.*

# Color ADD & The Color Blindness

## The Color Blindness

It is a limitation that affects 10% of men world's population - approximately 350 million people worldwide. This limitation, hereditary condition, is transmitted through the X chromosome and creates its colour-blind bearer major constraints in terms of social and professional integration.

90.0% asks for help in the purchase of clothing

87.7% have difficulty in choosing / using clothing

64.3% believe the confusion of colours as the biggest problem

73.2% have felt embarrassed

41.5% have difficulty at the level of social integration

## Symbols That Include Colour

Developed based on the three primary colours represented by graphic symbols, the ColorADD code is based on the concept of "adding colour", allowing the colour-blind to relate the symbols and easily identify the whole palette.

White and black come to guide light and dark shades. The code becomes a "mental game" easy to remember and easy to apply in the day by day!

## Th Clothes & Coloradd

The adoption of the ColorADD code has to do with the TH Clothes social concern.

We believe that with this new tool we help to greatly improve the day by day life of millions of people. We see the code as an innovative and effective tool that provides a more inclusive character, allowing about 350 million people a better interpretation of our colours. With this step, we broke another barrier and allow everyone a correct interpretation of 90% of the information communicated today, as well as a more assertive choice of colours from our range.

### color / symbol



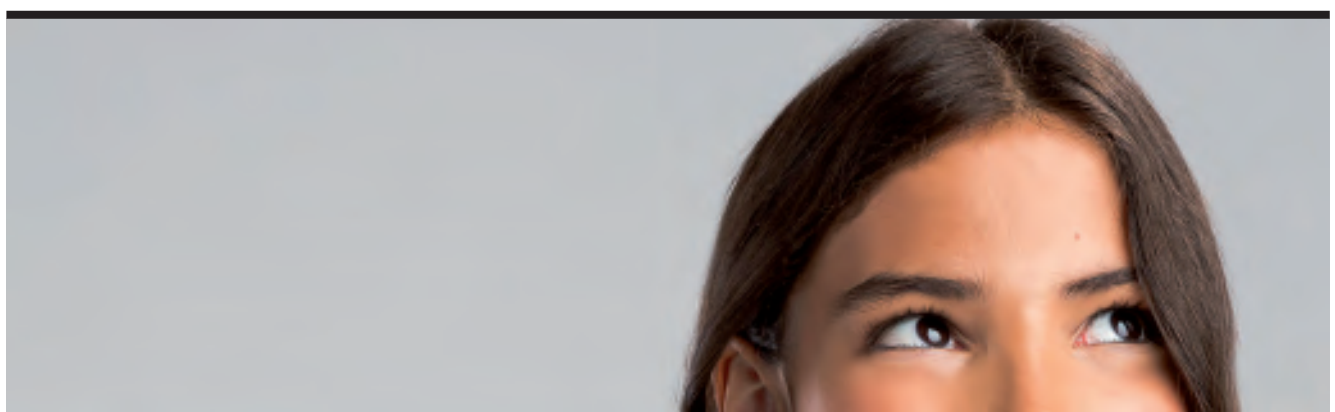
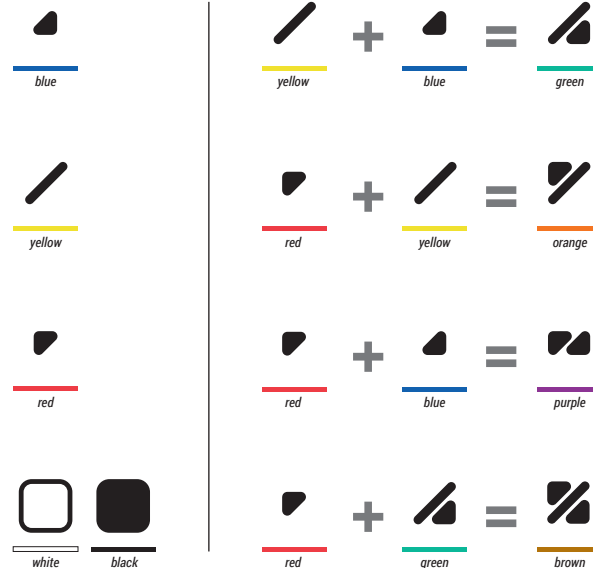
### light tones



### dark tones



### adding color



# Syntax

*Th Clothes continues to fulfil the needs of its customers. We introduced easily removable labels that safeguard the washing instructions, making the branding process easier.*



New!



Fits U



Top Seller



Sublimation



Windproof



Extra Confort



Breathable



Washable At 60°



Waterproof



Direct Printing



Best Price



High Visibility



Water Repellent



Gemini



Soft Touch



Ultra Light



Unisex



Kids



Stretch



Removable Label

---

# Technical Info

## T-shirt T-you


---



### Luanda

men's t-shirt  
150 g/m<sup>2</sup>

#### Expedition Information

Box    
56X37X30 CM // 16,5KG 10 100



### Sofia

women's t-shirt  
150 g/m<sup>2</sup>

#### Expedition Information

Box    
47x33x30 CM // 12,5KG 10 100



### Ankara

men's t-shirt  
190 g/m<sup>2</sup>

#### Expedition Information



Box    
59x35x34 CM // 21,4KG 10 100



### Ankara Women

women's t-shirt  
190 g/m<sup>2</sup>

#### Expedition Information

Box    
46x33x35 CM // 13,7KG 10 100



### San Marino

men's t-shirt  
195 g/m<sup>2</sup>

#### Expedition Information

Box    
55x39x30 CM // 14KG 5 50



### THC Sub

unisex t-shirt  
160 g/m<sup>2</sup>

#### Expedition Information

Box    
56x37x50 CM // 16,5KG 10 100

# Technical Info

## T-shirt T-you



### Athens

men's "v-neck" t-shirt  
150 g/m<sup>2</sup>

#### Expedition Information

Box    
54x38x30 CM // 10,2KG 10 100



### Athens Women

women's "v-neck" t-shirt  
150 g/m<sup>2</sup>

#### Expedition Information



Box    
47x32x30 CM // 8,2KG 10 100



### Tirana

women's tank top  
160 g/m<sup>2</sup>

#### Expedition Information

Box    
47,5x33x28 CM // 11,5KG 10 100



### Ibiza

men's tank top  
140 g/m<sup>2</sup>

#### Expedition Information


Box    
50x35x15 CM // 4,1KG 5 50



### Bucharest

men's long sleeve t-shirt  
150 g/m<sup>2</sup>

#### Expedition Information

Box    
58x38x22 CM // 11,8KG 5 50



### Bucharest Women

women's long sleeve t-shirt  
150 g/m<sup>2</sup>

#### Expedition Information

Box    
45x33x25 CM // 8,7KG 5 50



# Technical Info

## We <3 Sports



### Nicosia

men's sports t-shirt  
125 g/m<sup>2</sup>

#### Expedition Information

Box    
60x33x34 CM // 15KG 10 100



### Nicosia Women

women's sports t-shirt  
125 g/m<sup>2</sup>

#### Expedition Information

Box    
52x30x32 CM // 12KG 10 100



### Riga

unisex sports trousers  
260 g/m<sup>2</sup>

#### Expedition Information

Box    
58x38x25 CM // 9KG 1 20



### Brussels

unisex padded down parka

#### Expedition Information

Box    
62x40x46 CM // 15,5KG 1 10

# Technical Info

## Work + Fun



### Dhaka

men's polo shirt  
195 g/m<sup>2</sup>

#### Expedition Information

Box    
55x39x30 CM // 14KG 5 50



### Adam

men's polo shirt  
195 g/m<sup>2</sup>

#### Expedition Information



Box    
55x39x30 CM // 14KG 5 50



## Eve

women's polo shirt  
195 g/m<sup>2</sup>

### Expedition Information

Box    
51X34X31 CM // 10,8KG 5 50



## Monaco

men's polo shirt  
240 g/m<sup>2</sup>

### Expedition Information

Box    
55X39X30 CM // 14KG 5 50



## Rome

men's polo shirt  
195 g/m<sup>2</sup>

### Expedition Information


Box    
60X39X30 CM // 12KG 5 50



## Rome Women

women's polo shirt  
195 g/m<sup>2</sup>

### Expedition Information

Box    
60X39X30 CM // 11,5KG 5 50



## Berlin

men's polo shirt  
195 g/m<sup>2</sup>

### Expedition Information

Box    
60X39X30 CM // 12KG 5 50



## Bern

men's long sleeve polo shirt  
210 g/m<sup>2</sup>

### Expedition Information

Box    
56X39X35 CM // 17,8KG 5 50



## Bern Women

women's long sleeve  
polo shirt  
210 g/m<sup>2</sup>

### Expedition Information

Box    
45x34x38 CM // 13KG 5 50

# Technical Info

## Corporate



### Batalha

men's long sleeve  
poplin shirt  
115 g/m<sup>2</sup>

#### Expedition Information

Box  
51x36x35 CM // 4,9KG



1 20



### Batalha Women

women's long sleeve  
poplin shirt  
115 g/m<sup>2</sup>

#### Expedition Information

Box  
51x36x35 CM // 4,9KG



1 20



### Tokyo

men's long sleeve  
oxford shirt  
130 g/m<sup>2</sup>

#### Expedition Information

Box  
56x36x32 CM // 8,2KG



1 20



### Tokyo Women

women's long sleeve  
oxford shirt  
130 g/m<sup>2</sup>

#### Expedition Information

Box  
55x36x17 CM // 4,6KG



1 20



### London

men's short sleeve  
oxford shirt  
130 g/m<sup>2</sup>

#### Expedition Information

Box  
55x36x17 CM // 7,3KG



1 20



### London Women

women's short sleeve  
oxford shirt  
130 g/m<sup>2</sup>

#### Expedition Information

Box  
55x36x17 CM // 12KG



1 20

# Technical Info Selection



## Milan RN

men's round neck jumper  
220 g/m<sup>2</sup>

### Expedition Information

Box    
53x35x24 CM // 8,5KG 1 25



## Lisbon - Blazer

men's slim fit suit blazer

### Expedition Information



Box    
75X51,5X94 CM // 14,5KG 1 12



## Lisbon - Trousers

men's slim fit suit trousers

### Expedition Information

Box    
41,5X38X28 CM // 11,3KG 1 12



## Milan

men's "v-neck" jumper  
220 g/m<sup>2</sup>

### Expedition Information

Box    
53X35X24 CM // 8,5KG 1 25



## Milan Women

women's "v-neck" jumper  
220 g/m<sup>2</sup>

### Expedition Information

Box    
53X35X24 CM // 8,5KG 1 25



## Paris

men's long sleeve  
poplin shirt  
115 g/m<sup>2</sup>

### Expedition Information

Box    
55X36X17 CM // 4,9KG 1 20



## Paris Women

women's long sleeve  
poplin shirt  
115 g/m<sup>2</sup>

### Expedition Information

Box    
55X36X17 CM // 4,9KG 1 20



## Madrid

men's short sleeve  
poplin shirt  
115 g/m<sup>2</sup>

### Expedition Information



Box    
57X37X30 CM // 7,7KG 1 20



## Madrid Women

women's short sleeve  
poplin shirt  
115 g/m<sup>2</sup>

### Expedition Information

Box    
55X36X17 CM // 4,9KG 1 20



# Technical Info Cool Sweats



## Delta

unisex sweatshirt  
300 g/m<sup>2</sup>

### Expedition Information



Box    
57,7X39,5X41 CM // 14,2KG 5 30



## Phoenix

unisex hooded sweatshirt  
320 g/m<sup>2</sup>

### Expedition Information

Box    
56,7X39,5X39 CM // 12,4KG 1 20



## Moscow

unisex bicolor sweatshirt  
320 g/m<sup>2</sup>

### Expedition Information


Box    
56,7X39,5X39 CM // 1,4KG 1 20



## Amsterdam

men's hooded  
full zipped sweatshirt  
320 g/m<sup>2</sup>

### Expedition Information



Box    
58,5X36X56 CM // 13KG 1 20



## Amsterdam Women

women's hooded  
full zipped sweatshirt  
320 g/m<sup>2</sup>

### Expedition Information

Box    
58,5X36X56 CM // 12KG 1 20



## Budapest

unisex sweatshirt  
with 1/4 zip  
320 g/m<sup>2</sup>

### Expedition Information

Box    
56X34X44 CM // 13KG 5 20



# Technical Info Winter Wonderland



## Helsinki

men's polar fleece jacket  
260 g/m<sup>2</sup>

### Expedition Information

Box    
60X39X30 CM // 15,2KG 1 20



## Helsinki Women

women's polar fleece jacket  
260 g/m<sup>2</sup>

### Expedition Information



Box    
60X38X46 CM // 14KG 1 20



## Vienna

unisex polar fleece  
with 1/4 zip  
260 g/m<sup>2</sup>

### Expedition Information

Box    
60X38X42 CM // 13,8KG 1 20



## Dublin

unisex windbreaker  
with mesh lined hood  
65 g/m<sup>2</sup>

### Expedition Information

Box    
60X40X21 CM // 10KG 5 50



## Prague

unisex windbreaker  
with jersey lining

### Expedition Information

Box    
60X40X21 CM // 10KG 1 30

# Technical Info

## Natural Kids



### Quito

kid's t-shirt  
150 g/m<sup>2</sup>

#### Expedition Information

Box    
38X26,5X30 CM // 9KG 10 100



### Ankara Kids

kid's t-shirt  
190 g/m<sup>2</sup>

#### Expedition Information

Box    
42X27X36CM // 12,6KG 10 100



### Adam Kids

kid's polo shirt  
195 g/m<sup>2</sup>

#### Expedition Information

Box    
42X30X26 CM // 7,9KG 5 50



### Phoenix Kids

kid's unisex hooded  
sweatshirt  
320 g/m<sup>2</sup>

#### Expedition Information

Box    
58X38X27 CM // 8,8KG 1 20



### Dublin Kids

kid's unisex windbreaker  
with mesh lined hood  
65 g/m<sup>2</sup>

#### Expedition Information

Box    
58X38X27 CM // 8,8KG 5 50



# Technical Info

## Good Work



### Stockholm

workwear padded  
bodywarmer

#### Expedition Information

Box    
60X40X22 CM // 6KG 1 10



### Warsaw

men's workwear trousers

#### Expedition Information

Box    
40X35X20 CM // 7KG 1 10



### Warsaw Protect

protective kneepads

#### Expedition Information

Box    
50X36X44 CM // 4KG 1 40



### Zagreb Work

men's high visibility softshell  
320 g/m<sup>2</sup>

#### Expedition Information

Box    
61X44X38 CM // 18 KG 1 20





# Technical Info



## Essential Jackets



### Oporto

men's bicolor  
sportswear jacket  
160 g/m<sup>2</sup>

#### Expedition Information

Box    
51X36X35 CM // 4,9 KG 1 20



### Skopje

men's full zip  
hooded jacket

#### Expedition Information

Box    
60X40X35 CM // 16 KG 1 20



### Zagreb

men's softshell with  
removable hood  
280 g/m<sup>2</sup>

#### Expedition Information

Box    
61X44X38 CM // 18KG 1 20



### Zagreb Women

women's softshell with  
removable hood  
280 g/m<sup>2</sup>

#### Expedition Information



Box    
58X38X36CM // 17KG 1 20



### Liubliana

unisex heavy-weight coat

#### Expedition Information

Box    
61,5X42X31,5 CM // 12,1KG 1 10



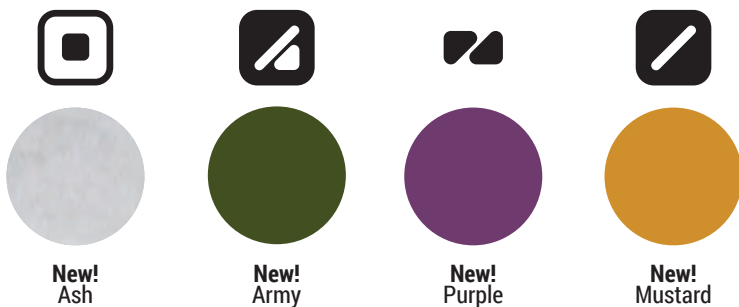
### Copenhagen

unisex padded jacket

#### Expedition Information

Box    
75X57X35 CM // 12KG 1 15

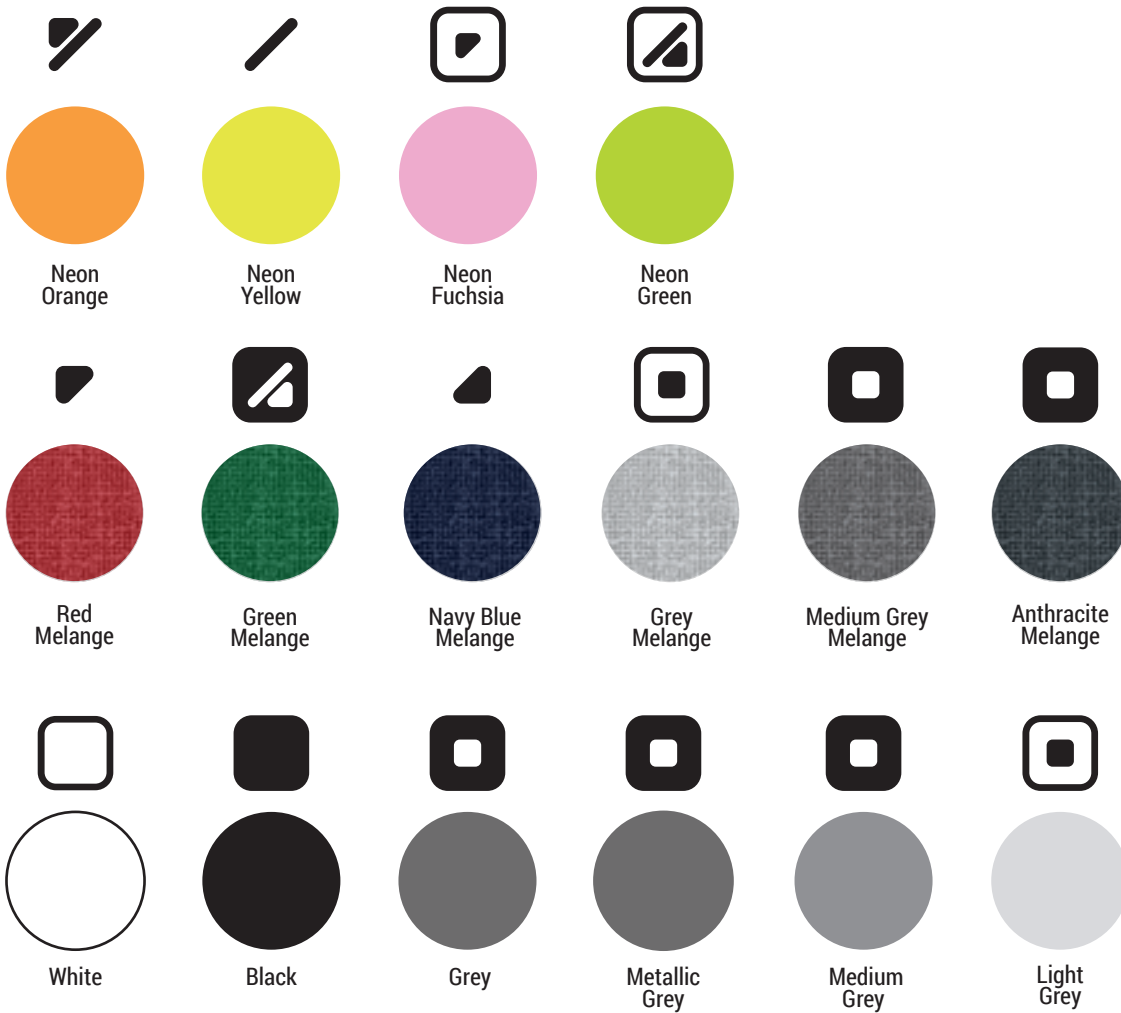
# COLOUR PALETTE



## 10 NEW! COLOURS

## 6 PASTEL







**CENTRO**  
**2020**

**PORTUGAL**  
**2020**



UNIÃO EUROPEIA

Fundos Europeus  
Estruturais e de Investimento



*We thank ESAD.CR - Caldas da Rainha School of Arts and Design -  
the lending of its space for the outdoor photos in the TH Clothes 2019 catalog.  
The building, by the architect Vítor Figueiredo (1929-2004), won the Secil Prize for Architecture in 1998.*

***thclothes.com***